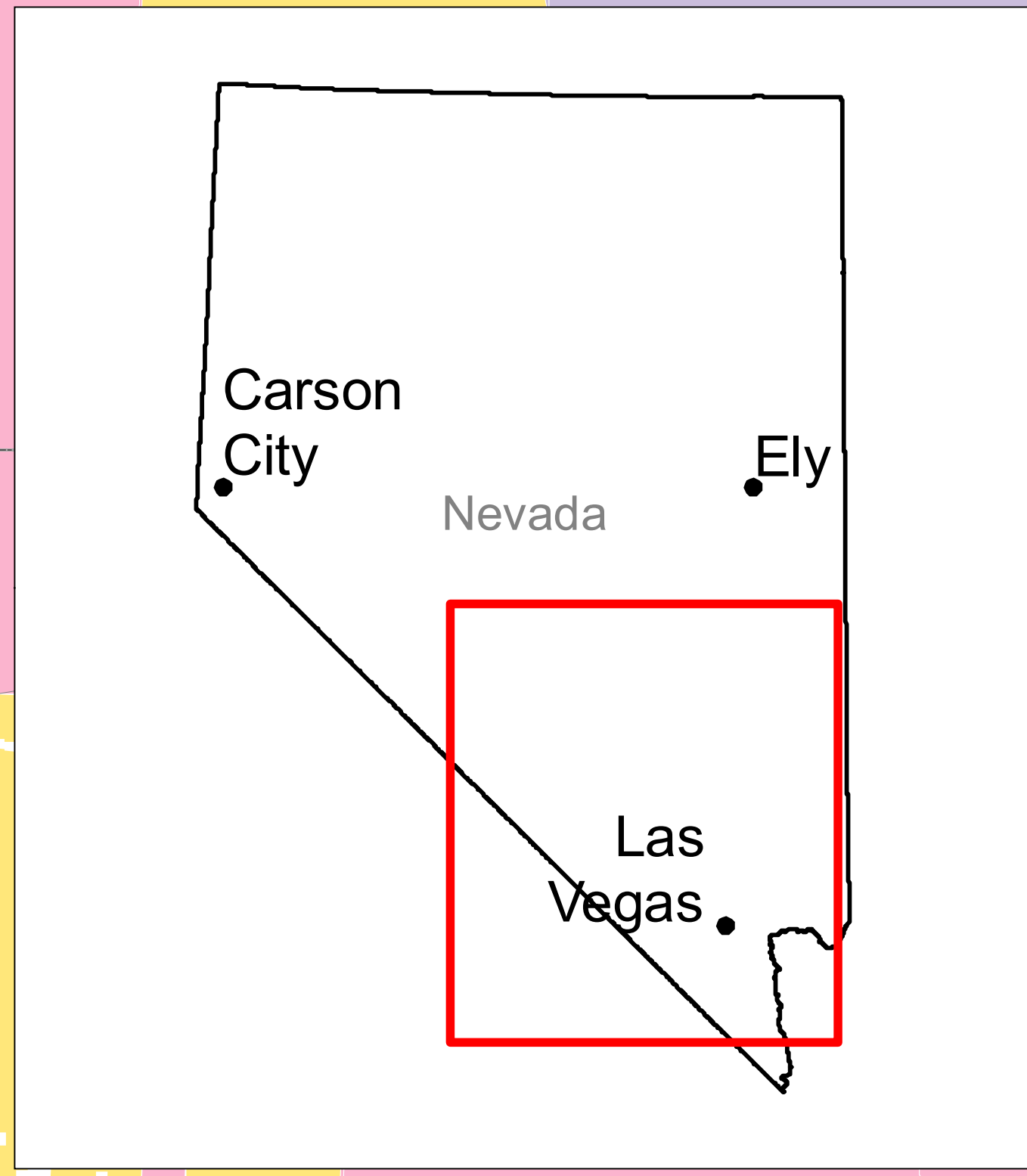
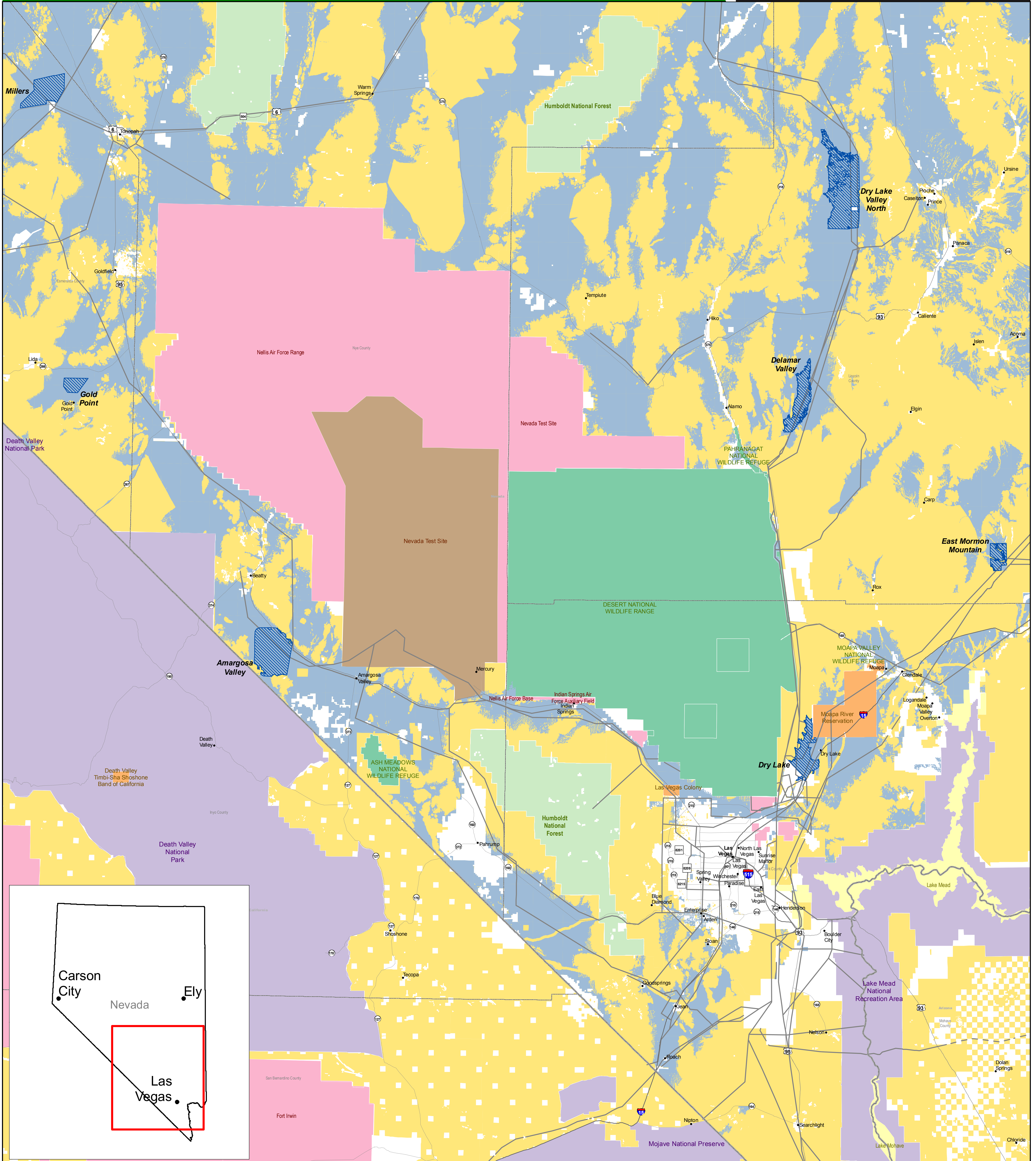


Solar Energy Study Areas in Nevada

Map Prepared June 5, 2009

Property of the U.S. Departments of Energy and the Interior for Use in preparation of their Programmatic Environmental Impact Statement to Develop and Implement Agency-Specific Programs for Solar Energy Development



Surface Management Agency As of 3/26/2009		
	Tribal Lands	
	BLM	
	BOR	
	DOD	
	DOE	
	FWS	
	USFS	

	State Line		Existing Designated Corridor (See Note 2) (As of 6/5/2009)
	County Boundary		Solar Energy Study Area (As of 6/5/2009)
			BLM Lands Being Analyzed for Solar Development in PEIS (As of 6/5/2009)

NOTE 1
Revisions to the National Landscape Conservation System included in Public Law 111-11 are not yet reflected in this map.

NOTE 2
Designated Corridors are developed for federal land use planning purposes only and are not applicable to state-owned or privately-owned land.

