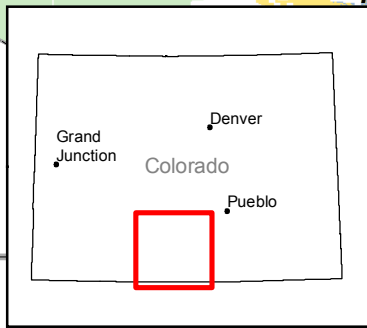
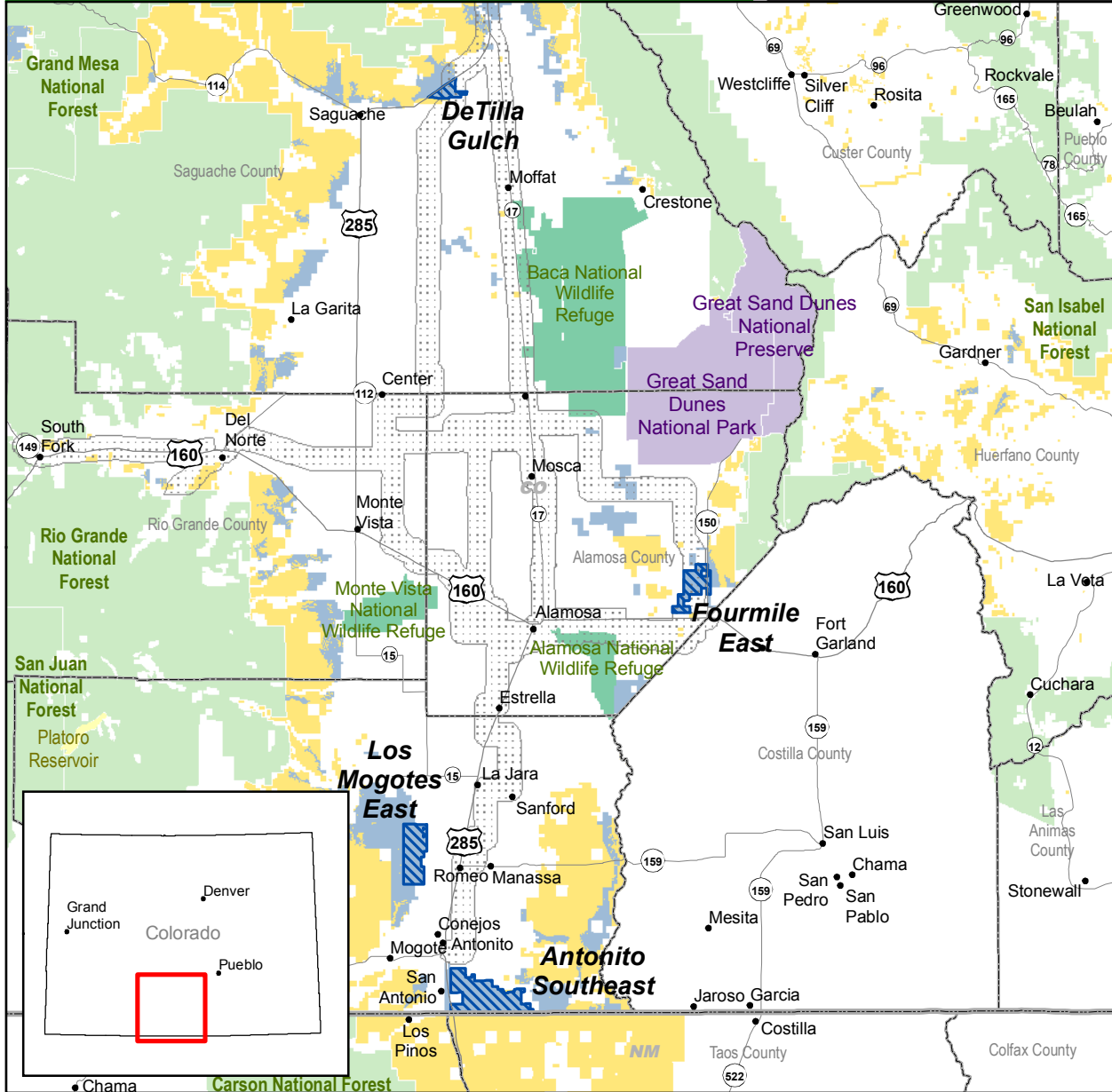


Solar Energy Study Areas in Colorado

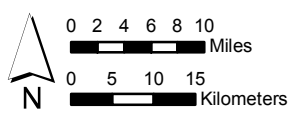
Map Prepared June 5, 2009

Property of the U.S. Departments of Energy and the Interior
for Use in Preparation of their Programmatic Environmental Impact Statement
to Develop and Implement Agency-Specific Programs for Solar Energy Development



Surface Management Agency As of 3/26/2009			
 Tribal Lands	 DOD	 NPS	
 BLM	 DOE	 OTHER	
 BOR	 FWS	 USFS	

- State Line
- County Boundary
- Solar Energy Study Area (As of 6/5/2009)
- Existing Designated Corridor (See Note 2) (As of 6/5/2009)
- BLM Lands Being Analyzed for Solar Development in PEIS (As of 6/5/2009)



NOTE 1: Revisions to the National Landscape Conservation System included in Public Law 111-11 are not yet reflected in this map.
NOTE 2: Designated Corridors are developed for federal land use planning purposes only and are not applicable to state-owned or privately-owned land. SOL138