



**Transmission of material in this release is embargoed until
 8:30 a.m. (ET) January 13, 2021**

USDL-21-0024

Technical information: (202) 691-7000 • cpi_info@bls.gov • www.bls.gov/cpi
 Media Contact: (202) 691-5902 • PressOffice@bls.gov

CONSUMER PRICE INDEX – DECEMBER 2020

(NOTE: This news release was reissued January 19, 2021, correcting 29 seasonally adjusted CPI-U special relative series in tables 2 and 6. Additional information is available at www.bls.gov/errata/home.htm?errataID=82899.)

The Consumer Price Index for All Urban Consumers (CPI-U) increased 0.4 percent in December on a seasonally adjusted basis after rising 0.2 percent in November, the U.S. Bureau of Labor Statistics reported today. Over the last 12 months, the all items index increased 1.4 percent before seasonal adjustment.

The seasonally adjusted increase in the all items index was driven by an 8.4-percent increase in the gasoline index, which accounted for more than 60 percent of the overall increase. The other components of the energy index were mixed, resulting in an increase of 4.0 percent for the month. The food index rose in December, as both the food at home and the food away from home indexes increased 0.4 percent.

The index for all items less food and energy increased 0.1 percent in December after rising 0.2 percent in the previous month. The indexes for apparel, motor vehicle insurance, new vehicles, personal care, and household furnishings and operations all rose in December. The indexes for used cars and trucks, recreation, and medical care were among those to decline over the month.

The all items index rose 1.4 percent for the 12 months ending December, a slightly larger increase than the 1.2-percent rise reported for the period ending November. The index for all items less food and energy rose 1.6 percent over the last 12 months, as it did in the periods ending October and November. The food index rose 3.9 percent over the last 12 months, while the energy index fell 7.0 percent.

Chart 1. One-month percent change in CPI for All Urban Consumers (CPI-U), seasonally adjusted, Dec. 2019 - Dec. 2020
 Percent change

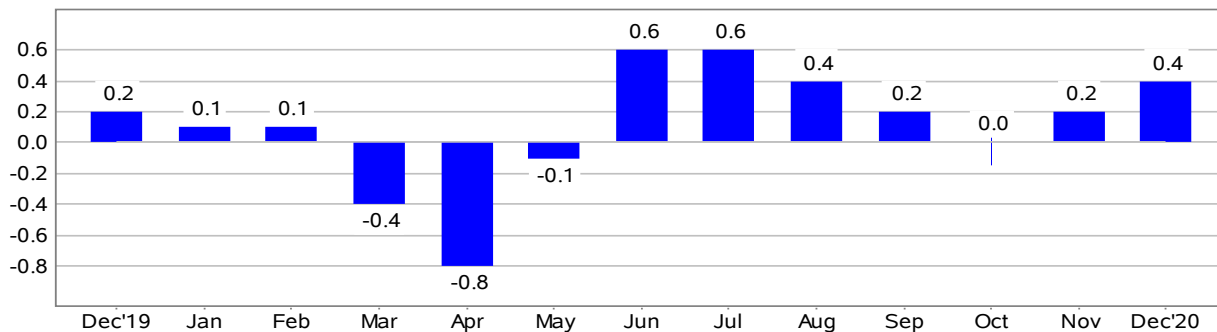


Chart 2. 12-month percent change in CPI for All Urban Consumers (CPI-U), not seasonally adjusted, Dec. 2019 - Dec. 2020
Percent change

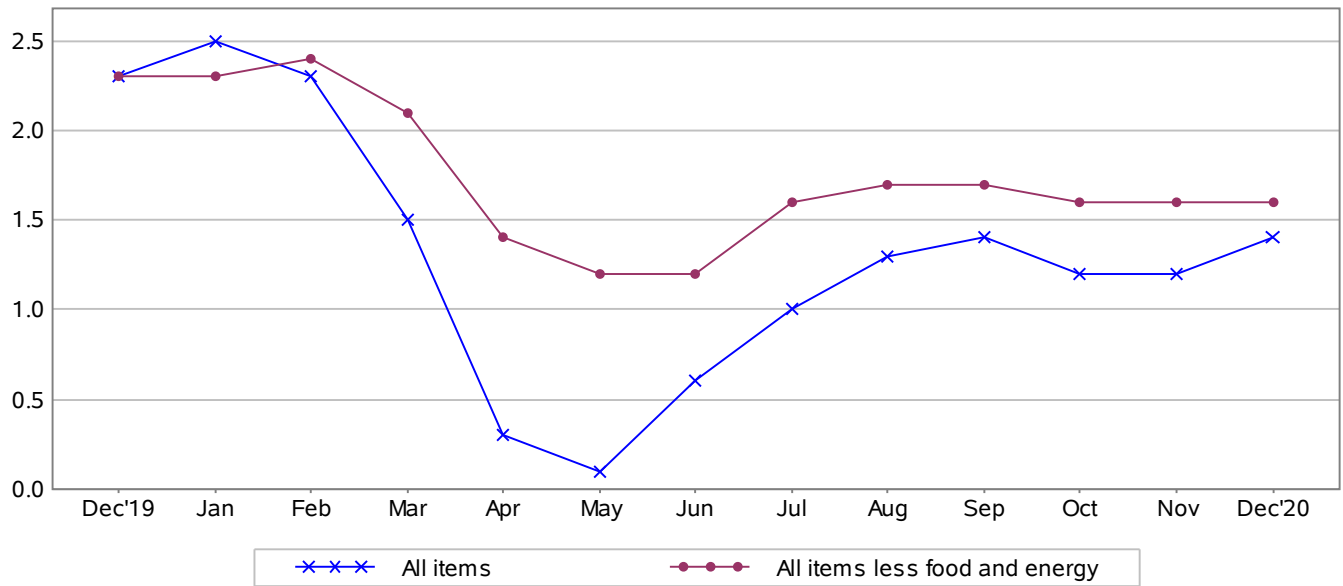


Table A. Percent changes in CPI for All Urban Consumers (CPI-U): U.S. city average

	Seasonally adjusted changes from preceding month							Un-adjusted 12-mos. ended Dec. 2020
	Jun. 2020	Jul. 2020	Aug. 2020	Sep. 2020	Oct. 2020	Nov. 2020	Dec. 2020	
All items.....	0.6	0.6	0.4	0.2	0.0	0.2	0.4	1.4
Food.....	0.6	-0.4	0.1	0.0	0.2	-0.1	0.4	3.9
Food at home.....	0.7	-1.1	-0.1	-0.4	0.1	-0.3	0.4	3.9
Food away from home ¹	0.5	0.5	0.3	0.6	0.3	0.1	0.4	3.9
Energy.....	5.1	2.5	0.9	0.8	0.1	0.4	4.0	-7.0
Energy commodities.....	11.7	5.3	2.0	-0.1	-0.5	-0.2	8.2	-15.2
Gasoline (all types).....	12.3	5.6	2.0	0.1	-0.5	-0.4	8.4	-15.2
Fuel oil.....	10.2	4.3	3.9	-5.3	-0.3	3.6	10.0	-20.0
Energy services.....	-0.2	0.0	-0.2	1.6	0.8	1.1	0.1	2.6
Electricity.....	-0.3	0.3	-0.2	0.9	1.2	0.5	0.4	2.2
Utility (piped) gas service.....	0.0	-1.0	-0.2	4.2	-0.7	3.1	-0.8	4.1
All items less food and energy.....	0.2	0.6	0.4	0.2	0.0	0.2	0.1	1.6
Commodities less food and energy commodities.....	0.2	0.7	1.0	0.8	-0.2	0.1	0.2	1.7
New vehicles.....	0.0	0.8	0.0	0.3	0.4	-0.1	0.4	2.0
Used cars and trucks.....	-1.2	2.3	5.4	6.7	-0.1	-1.3	-1.2	10.0
Apparel.....	1.7	1.1	0.6	-0.5	-1.2	0.9	1.4	-3.9
Medical care commodities.....	0.2	0.0	-0.1	0.0	-0.8	-0.3	-0.4	-2.5
Services less energy services.....	0.3	0.6	0.2	0.0	0.1	0.2	0.1	1.6
Shelter.....	0.1	0.2	0.1	0.1	0.1	0.1	0.1	1.8
Transportation services.....	2.1	3.6	0.0	-0.9	0.1	1.8	-0.1	-3.5
Medical care services.....	0.5	0.5	0.1	0.0	-0.3	-0.1	-0.1	2.8

¹ Not seasonally adjusted.

Food

The food index increased 0.4 percent in December following a 0.1-percent decrease in November. The index for food at home increased 0.4 percent after declining in November. Major grocery store food group indexes were mixed over the month. The index for other food at home rose 0.7 percent in December after falling 0.6 percent in November. The nonalcoholic beverages index increased 1.1 percent after a 0.9-percent decline in the previous month. The index for dairy and related products rose 0.8 percent in December, and the index for cereals and bakery products increased 0.4 percent over the month.

The index for meats, poultry, fish, and eggs declined 0.2 percent in December, following a 0.1-percent increase the previous month. The index for fruits and vegetables also declined 0.2 percent over the month.

The index for food away from home rose 0.4 percent in December, after rising 0.1 percent in November. The index for limited service meals rose 0.5 percent, while the index for full service meals increased 0.3 percent.

The food at home index increased 3.9 percent over the past 12 months. All six major grocery store food group indexes increased over the period. The largest increase was the meats, poultry, fish, and eggs index which rose 4.6 percent as the beef index increased 5.3 percent. The smallest increases were for the cereals and bakery products and the fruits and vegetables indexes, which both increased 3.2 percent over the last 12 months. The index for food away from home rose 3.9 percent over the last year. The index for limited service meals rose 6.0 percent and the index for full service meals rose 3.0 percent over the span.

Energy

The energy index rose for the seventh month in a row in December, increasing 4.0 percent. The largest contribution to this increase was the gasoline index, which increased 8.4 percent in December after declining in the previous 2 months. (Before seasonal adjustment, gasoline prices rose 3.4 percent in December.) The index for electricity rose 0.4 percent over the month, while the index for natural gas fell 0.8 percent.

Despite the monthly increase, the energy index fell 7.0 percent over the past 12 months. Energy commodity indexes fell sharply over the period, with the fuel oil index declining 20.0 percent and the gasoline index decreasing 15.2 percent. Energy service indexes rose over the last 12 months, with the index for natural gas increasing 4.1 percent and the index for electricity rising 2.2 percent.

All items less food and energy

The index for all items less food and energy rose 0.1 percent in December after rising 0.2 percent in November. The shelter index rose 0.1 percent in December, the fifth 0.1-percent increase in a row for that index. The indexes for rent and owners' equivalent rent both increased 0.1 percent in December, after both were unchanged in November. The index for lodging away from home was unchanged in December after rising sharply in November.

The index for apparel increased 1.4 percent in December, as did the index for motor vehicle insurance. The index for personal care and the index for new vehicles both rose 0.4 percent over the month after falling 0.1 percent the previous month. The index for household furnishings and operations increased 0.2 percent in December after rising 0.7 percent in November.

The index for used cars and trucks declined for the third consecutive month, falling 1.2 percent in December. The recreation index fell 0.3 percent in December, ending a string of 4 consecutive monthly increases. The index for medical care continued to decline in December, falling 0.2 percent after decreasing 0.1 percent in November. The index for prescription drugs declined 0.4 percent over the month, while the index for hospital services rose 0.3 percent in December, and the index for physicians' services was unchanged.

The index for all items less food and energy rose 1.6 percent over the past 12 months. The shelter index rose 1.8 percent over the last 12 months. The used cars and trucks index increased 10.0 percent over the last 12 months and the medical care index increased 1.8 percent. Indexes which declined over the past 12 months included the indexes for airline fares, apparel, lodging away from home, and motor vehicle insurance.

Not seasonally adjusted CPI measures

The Consumer Price Index for All Urban Consumers (CPI-U) increased 1.4 percent over the last 12 months to an index level of 260.474 (1982-84=100). For the month, the index increased 0.1 percent prior to seasonal adjustment.

The Consumer Price Index for Urban Wage Earners and Clerical Workers (CPI-W) increased 1.4 percent over the last 12 months to an index level of 254.081 (1982-84=100). For the month, the index rose 0.1 percent prior to seasonal adjustment.

The Chained Consumer Price Index for All Urban Consumers (C-CPI-U) increased 1.2 percent over the last 12 months. For the month, the index increased 0.1 percent on a not seasonally adjusted basis. Please note that the indexes for the past 10 to 12 months are subject to revision.

Year in Review (December to December)

The all items CPI-U rose 1.4 percent in 2020. This was smaller than the 2019 increase of 2.3 percent and the smallest December-to-December increase since the 0.7-percent rise in 2015. The index rose at a 1.7-percent average annual rate over the last 10 years.

The food index increased 3.9 percent in 2020, a larger increase than the 2019 rise of 1.8 percent. The index for food at home also increased 3.9 percent in 2020, a larger increase than the 0.7-percent increase reported for 2019. Over the last 10 years, the food index rose at a 2.0-percent average annual rate, and the food at home index increased at a 1.5-percent average annual rate.

All six major grocery store food group indexes rose in 2020. The index for meats, poultry, fish, and eggs rose 4.6 percent in 2020 after rising 2.3 percent in 2019. Similarly, the dairy and related products index increased 4.4 percent in 2020 after increasing 2.4 percent in 2019. The index for nonalcoholic beverages also increased by 4.4 percent in 2020, while the index for other food at home rose 3.9 percent over the year. The cereals and bakery products and the fruits and vegetables indexes both increased 3.2 percent in 2020.

The index for food away from home rose 3.9 percent in 2020, a somewhat larger increase than the 3.1 percent increase in 2019 and the largest December-to-December rise since 2008. The food away from home index increased at a 2.7-percent average annual rate over the last 10 years.

The energy index decreased 7.0 percent in 2020 after increasing 3.4 percent in 2019. The index for gasoline fell 15.2 percent in 2020 after rising 7.9 percent the previous year. The index for fuel oil fell 20.0 percent in 2020. These declines more than offset increases in the other energy component indexes. The index for natural gas rose 4.1 percent in 2020 after falling 3.5 percent in 2019, while the index for electricity increased 2.2 percent over the year after declining 0.4 percent in the previous year. The energy index decreased at a 0.9-percent average annual rate since December 2010.

The index for all items less food and energy rose 1.6 percent in 2020, a smaller increase than the 2.3-percent increase reported for 2019, and smaller than the 2.0-percent average annual rate over the past 10 years. The shelter index rose 1.8 percent, the smallest December-to-December increase since 2010. The index for rent increased 2.3 percent in 2020, while the index for owners' equivalent rent increased 2.2 percent. The index for household furnishings and operations increased 3.2 percent in 2020 after increasing 1.0 percent in 2019. In contrast, the index for lodging away from home fell 9.5 percent in 2020, the largest December-to-December decrease ever reported for that index, which dates to December 1997.

The medical care index increased 1.8 percent in 2020, a smaller increase than the 4.6-percent increase reported for 2019. The index for hospital services rose 3.0 percent in 2020, the same increase as in 2019. The physicians' services index rose 1.7 percent over the year. The index for prescription drugs, in contrast, fell 2.4 percent in 2020 after rising 3.0 percent in 2019. The medical care index increased at a 2.8-percent average annual rate over the last decade.

The index for used cars and trucks increased 10.0 percent in 2020, the largest December-to-December increase reported for that index since 1983. The new vehicles index rose 2.0 percent in 2020 after rising 0.1 percent in 2019. The index for motor vehicle insurance fell 4.8 percent over the year after being unchanged in 2019, the largest December-to-December decrease in that index since 1955.

The communication index increased 2.4 percent in 2020, a larger increase than the 0.7-percent increase reported in 2019. The index for education increased 1.4 percent over the year, less than the 2.1-percent increase in the previous year. The personal care index increased 1.8 percent in 2020, while the recreation index increased 0.9 percent. The index for tobacco increased 5.1 percent over the year, and the index for alcoholic beverages increased 2.8 percent. The index for airline fares declined 18.4 percent in 2020, the largest December-to-December decrease ever reported for that index, which was first published in December 1964. The apparel index continued to decline for the seventh consecutive year, falling 3.9 percent.

The Consumer Price Index for January 2021 is scheduled to be released on Wednesday, February 10, 2021 at 8:30 a.m. (ET).

Coronavirus (COVID-19) Pandemic Impact on December 2020 Consumer Price Index Data

Data collection by personal visit for the Consumer Price Index (CPI) program has been suspended since March 16, 2020. When possible, data normally collected by personal visit were collected either online or by phone. Additionally, data collection in December was affected by the temporary closing or limited operations of certain types of establishments. These factors resulted in an increase in the number of prices considered temporarily unavailable and imputed.

While the CPI program attempted to collect as much data as possible, many indexes are based on smaller amounts of collected prices than usual, and a small number of indexes that are normally published were not published this month. Additional information is available at www.bls.gov/covid19/effects-of-covid-19-pandemic-on-consumer-price-index.htm.

Technical Note

Brief Explanation of the CPI

The Consumer Price Index (CPI) measures the change in prices paid by consumers for goods and services. The CPI reflects spending patterns for each of two population groups: all urban consumers and urban wage earners and clerical workers. The all urban consumer group represents about 93 percent of the total U.S. population. It is based on the expenditures of almost all residents of urban or metropolitan areas, including professionals, the self-employed, the poor, the unemployed, and retired people, as well as urban wage earners and clerical workers. Not included in the CPI are the spending patterns of people living in rural nonmetropolitan areas, farming families, people in the Armed Forces, and those in institutions, such as prisons and mental hospitals. Consumer inflation for all urban consumers is measured by two indexes, namely, the Consumer Price Index for All Urban Consumers (CPI-U) and the Chained Consumer Price Index for All Urban Consumers (C-CPI-U).

The Consumer Price Index for Urban Wage Earners and Clerical Workers (CPI-W) is based on the expenditures of households included in the CPI-U definition that meet two requirements: more than one-half of the household's income must come from clerical or wage occupations, and at least one of the household's earners must have been employed for at least 37 weeks during the previous 12 months. The CPI-W population represents about 29 percent of the total U.S. population and is a subset of the CPI-U population.

The CPIs are based on prices of food, clothing, shelter, fuels, transportation, doctors' and dentists' services, drugs, and other goods and services that people buy for day-to-day living. Prices are collected each month in 75 urban areas across the country from about 6,000 housing units and approximately 22,000 retail establishments (department stores, supermarkets, hospitals, filling stations, and other types of stores and service establishments). All taxes directly associated with the purchase and use of items are included in the index. Prices of fuels and a few other items are obtained every month in all 75 locations. Prices of most other commodities and services are collected every month in the three largest geographic areas and every other month in other areas. Prices of most goods and services are obtained by personal visits or telephone calls by the Bureau's trained representatives.

In calculating the index, price changes for the various items in each location are aggregated using weights, which represent their importance in the spending of the appropriate population group. Local data are then combined to obtain a U.S. city average. For the CPI-U and CPI-W, separate indexes are also published by size of city, by region of the country, for cross-classifications of regions and

population-size classes, and for 23 selected local areas. Area indexes do not measure differences in the level of prices among cities; they only measure the average change in prices for each area since the base period. For the C-CPI-U, data are issued only at the national level. The CPI-U and CPI-W are considered final when released, but the C-CPI-U is issued in preliminary form and subject to three subsequent quarterly revisions.

The index measures price change from a designed reference date. For most of the CPI-U and the CPI-W, the reference base is 1982-84 equals 100. The reference base for the C-CPI-U is December 1999 equals 100. An increase of 7 percent from the reference base, for example, is shown as 107.000. Alternatively, that relationship can also be expressed as the price of a base period market basket of goods and services rising from \$100 to \$107.

Sampling Error in the CPI

The CPI is a statistical estimate that is subject to sampling error because it is based upon a sample of retail prices and not the complete universe of all prices. BLS calculates and publishes estimates of the 1-month, 2-month, 6-month, and 12-month percent change standard errors annually for the CPI-U. These standard error estimates can be used to construct confidence intervals for hypothesis testing. For example, the estimated standard error of the 1-month percent change is 0.03 percent for the U.S. all items CPI. This means that if we repeatedly sample from the universe of all retail prices using the same methodology, and estimate a percentage change for each sample, then 95 percent of these estimates will be within 0.06 percent of the 1-month percentage change based on all retail prices. For example, for a 1-month change of 0.2 percent in the all items CPI-U, we are 95 percent confident that the actual percent change based on all retail prices would fall between 0.14 and 0.26 percent. For the latest data, including information on how to use the estimates of standard error, see <https://www.bls.gov/cpi/tables/variance-estimates/home.htm>.

Calculating Index Changes

Movements of the indexes from 1 month to another are usually expressed as percent changes rather than changes in index points, because index point changes are affected by the level of the index in relation to its base period, while percent changes are not. The following table shows an example of using index values to calculate percent changes:

	Item A	Item B	Item C
Year I	112.500	225.000	110.000
Year II	121.500	243.000	128.000
Change in index points	9.000	18.000	18.000
Percent change	$9.0/112.500 \times 100 = 8.0$	$18.0/225.000 \times 100 = 8.0$	$18.0/110.000 \times 100 = 16.4$

Use of Seasonally Adjusted and Unadjusted Data

The Consumer Price Index (CPI) produces both unadjusted and seasonally adjusted data. Seasonally adjusted data are computed using seasonal factors derived by the X-13ARIMA-SEATS seasonal adjustment method. These factors are updated each February, and the new factors are used to revise the previous 5 years of seasonally adjusted data. The factors are available at www.bls.gov/cpi/tables/seasonal-adjustment/seasonal-factors-2020.pdf. For more information on data revision scheduling, please see the Factsheet on Seasonal Adjustment at www.bls.gov/cpi/seasonal-

adjustment/questions-and-answers.htm and the Timeline of Seasonal Adjustment Methodological Changes at www.bls.gov/cpi/seasonal-adjustment/timeline-seasonal-adjustment-methodology-changes.htm.

For analyzing short-term price trends in the economy, seasonally adjusted changes are usually preferred since they eliminate the effect of changes that normally occur at the same time and in about the same magnitude every year—such as price movements resulting from weather events, production cycles, model changeovers, holidays, and sales. This allows data users to focus on changes that are not typical for the time of year. The unadjusted data are of primary interest to consumers concerned about the prices they actually pay. Unadjusted data are also used extensively for escalation purposes. Many collective bargaining contract agreements and pension plans, for example, tie compensation changes to the Consumer Price Index before adjustment for seasonal variation. BLS advises against the use of seasonally adjusted data in escalation agreements because seasonally adjusted series are revised annually.

Intervention Analysis

The Bureau of Labor Statistics uses intervention analysis seasonal adjustment for some CPI series. Sometimes extreme values or sharp movements can distort the underlying seasonal pattern of price change. Intervention analysis seasonal adjustment is a process by which the distortions caused by such unusual events are estimated and removed from the data prior to calculation of seasonal factors. The resulting seasonal factors, which more accurately represent the seasonal pattern, are then applied to the unadjusted data.

For example, this procedure was used for the motor fuel series to offset the effects of the 2009 return to normal pricing after the worldwide economic downturn in 2008. Retaining this outlier data during seasonal factor calculation would distort the computation of the seasonal portion of the time series data for motor fuel, so it was estimated and removed from the data prior to seasonal adjustment. Following that, seasonal factors were calculated based on this “prior adjusted” data. These seasonal factors represent a clearer picture of the seasonal pattern in the data. The last step is for motor fuel seasonal factors to be applied to the unadjusted data.

For the seasonal factors introduced for January 2020, BLS adjusted 53 series using intervention analysis seasonal adjustment, including selected food and beverage items, motor fuels, electricity, and vehicles.

Revision of Seasonally Adjusted Indexes

Seasonally adjusted data, including the U.S. city average all items index levels, are subject to revision for up to 5 years after their original release. Every year, economists in the CPI calculate new seasonal factors for seasonally adjusted series and apply them to the last 5 years of data. Seasonally adjusted indexes beyond the last 5 years of data are considered to be final and not subject to revision. For January 2020, revised seasonal factors and seasonally adjusted indexes for 2015 to 2019 were calculated and published. For series which are directly adjusted using the Census X-13ARIMA-SEATS seasonal adjustment software, the seasonal factors for 2019 will be applied to data for 2020 to produce the seasonally adjusted 2020 indexes. Series which are indirectly seasonally adjusted by summing seasonally adjusted component series have seasonal factors which are derived and are therefore not available in advance.

Determining Seasonal Status

Each year the seasonal status of every series is reevaluated based upon certain statistical criteria. Using these criteria, BLS economists determine whether a series should change its status from "not seasonally adjusted" to "seasonally adjusted", or vice versa. If any of the 81 components of the U.S. city average all items index change their seasonal adjustment status from seasonally adjusted to not seasonally adjusted,

not seasonally adjusted data will be used in the aggregation of the dependent series for the last 5 years, but the seasonally adjusted indexes before that period will not be changed. Twenty-eight of the 81 components of the U.S. city average all items index are not seasonally adjusted for 2020.

Contact Information

For additional information about the CPI visit www.bls.gov/cpi or contact the CPI Information and Analysis Section at 202-691-7000 or cpi_info@bls.gov.

For additional information on seasonal adjustment in the CPI visit www.bls.gov/cpi/seasonal-adjustment/home.htm or contact the CPI seasonal adjustment section at 202-691-6968 or cpiseas@bls.gov.

Information from this release will be made available to sensory impaired individuals upon request. Voice phone: 202-691-5200; Federal Relay Service: 1-800-877-8339.

Table 1. Consumer Price Index for All Urban Consumers (CPI-U): U.S. city average, by expenditure category, December 2020

[1982-84=100, unless otherwise noted]

Expenditure category	Relative importance Nov. 2020	Unadjusted indexes			Unadjusted percent change		Seasonally adjusted percent change		
		Dec. 2019	Nov. 2020	Dec. 2020	Dec. 2019- Dec. 2020	Nov. 2020- Dec. 2020	Sep. 2020- Oct. 2020	Oct. 2020- Nov. 2020	Nov. 2020- Dec. 2020
All items.....	100.000	256.974	260.229	260.474	1.4	0.1	0.0	0.2	0.4
Food.....	14.082	259.823	269.069	270.023	3.9	0.4	0.2	-0.1	0.4
Food at home.....	7.753	241.750	250.407	251.253	3.9	0.3	0.1	-0.3	0.4
Cereals and bakery products.....	0.999	275.036	282.782	283.735	3.2	0.3	0.3	-0.5	0.4
Meats, poultry, fish, and eggs.....	1.743	252.893	265.307	264.475	4.6	-0.3	0.4	0.1	-0.2
Dairy and related products.....	0.785	221.924	229.503	231.740	4.4	1.0	-0.9	0.3	0.8
Fruits and vegetables.....	1.341	297.105	306.311	306.506	3.2	0.1	0.1	0.0	-0.2
Nonalcoholic beverages and beverage materials.....	0.923	170.006	175.869	177.539	4.4	0.9	-0.1	-0.9	1.1
Other food at home.....	1.963	210.432	217.310	218.534	3.9	0.6	0.3	-0.6	0.7
Food away from home ¹	6.330	288.078	298.253	299.369	3.9	0.4	0.3	0.1	0.4
Energy.....	6.044	212.982	194.388	198.155	-7.0	1.9	0.1	0.4	4.0
Energy commodities.....	2.919	234.651	192.126	198.997	-15.2	3.6	-0.5	-0.2	8.2
Fuel oil.....	0.076	288.766	209.579	231.044	-20.0	10.2	-0.3	3.6	10.0
Motor fuel.....	2.782	230.189	188.544	194.996	-15.3	3.4	-0.6	-0.4	8.3
Gasoline (all types).....	2.721	228.857	187.609	193.990	-15.2	3.4	-0.5	-0.4	8.4
Energy services.....	3.125	201.446	205.921	206.758	2.6	0.4	0.8	1.1	0.1
Electricity.....	2.420	209.725	213.787	214.375	2.2	0.3	1.2	0.5	0.4
Utility (piped) gas service.....	0.705	173.652	179.226	180.767	4.1	0.9	-0.7	3.1	-0.8
All items less food and energy.....	79.874	264.935	269.473	269.226	1.6	-0.1	0.0	0.2	0.1
Commodities less food and energy commodities.....	20.279	142.920	145.750	145.317	1.7	-0.3	-0.2	0.1	0.2
Apparel.....	2.716	119.111	116.602	114.434	-3.9	-1.9	-1.2	0.9	1.4
New vehicles.....	3.734	146.220	148.063	149.091	2.0	0.7	0.4	-0.1	0.4
Used cars and trucks.....	2.778	137.125	152.324	150.891	10.0	-0.9	-0.1	-1.3	-1.2
Medical care commodities.....	1.586	387.533	378.810	377.921	-2.5	-0.2	-0.8	-0.3	-0.4
Alcoholic beverages.....	1.041	252.361	259.995	259.397	2.8	-0.2	0.3	0.4	0.0
Tobacco and smoking products.....	0.605	1,141.600	1,192.609	1,199.508	5.1	0.6	-0.2	0.3	1.0
Services less energy services.....	59.595	341.347	346.884	346.808	1.6	0.0	0.1	0.2	0.1
Shelter.....	33.320	321.766	327.435	327.702	1.8	0.1	0.1	0.1	0.1
Rent of primary residence.....	7.860	336.789	344.039	344.455	2.3	0.1	0.2	0.0	0.1
Owners' equivalent rent of residences ²	24.253	330.527	337.247	337.695	2.2	0.1	0.2	0.0	0.1
Medical care services.....	7.311	549.077	565.345	564.201	2.8	-0.2	-0.3	-0.1	-0.1
Physicians' services.....	1.821	385.092	392.156	391.807	1.7	-0.1	0.0	0.1	0.0
Hospital services ³	2.223	344.933	355.164	355.232	3.0	0.0	-0.6	0.3	0.3
Transportation services.....	5.189	324.209	315.554	312.959	-3.5	-0.8	0.1	1.8	-0.1
Motor vehicle maintenance and repair ¹	1.100	299.614	309.949	309.888	3.4	0.0	0.1	0.4	0.0
Motor vehicle insurance.....	1.577	572.979	537.765	545.376	-4.8	1.4	-2.3	1.1	1.4
Airline fares.....	0.687	252.411	223.360	205.983	-18.4	-7.8	6.3	3.5	-2.3

¹ Not seasonally adjusted.

² Indexes on a December 1982=100 base.

³ Indexes on a December 1996=100 base.

Table 2. Consumer Price Index for All Urban Consumers (CPI-U): U.S. city average, by detailed expenditure category, December 2020

[1982-84=100, unless otherwise noted]

Expenditure category	Relative importance Nov. 2020	Unadjusted percent change		Seasonally adjusted percent change		
		Dec. 2019- Dec. 2020	Nov. 2020- Dec. 2020	Sep. 2020- Oct. 2020	Oct. 2020- Nov. 2020	Nov. 2020- Dec. 2020
All items.....	100.000	1.4	0.1	0.0	0.2	0.4
Food.....	14.082	3.9	0.4	0.2	-0.1	0.4
Food at home.....	7.753	3.9	0.3	0.1	-0.3	0.4
Cereals and bakery products.....	0.999	3.2	0.3	0.3	-0.5	0.4
Cereals and cereal products.....	0.306	3.5	0.8	0.1	0.0	0.6
Flour and prepared flour mixes.....	0.041	3.2	0.3	1.1	0.7	0.0
Breakfast cereal ¹	0.141	2.8	1.0	0.2	-0.6	1.0
Rice, pasta, cornmeal ¹	0.124	4.4	0.7	-0.5	0.1	0.7
Rice ^{1, 2, 3}		5.9	0.0	-0.6	1.2	0.0
Bakery products ¹	0.693	3.0	0.1	0.3	-0.8	0.1
Bread ^{1, 2}	0.200	3.5	0.2	0.7	-0.5	0.2
White bread ^{1, 3}		3.3	0.0	0.7	-0.6	0.0
Bread other than white ^{1, 3}		4.2	0.7	0.8	-0.6	0.7
Fresh biscuits, rolls, muffins ²	0.101	3.0	0.3	-0.9	-0.7	0.2
Cakes, cupcakes, and cookies.....	0.178	3.0	0.3	1.1	-1.5	1.2
Cookies ^{1, 3}		4.3	0.7	2.1	-1.7	0.7
Fresh cakes and cupcakes ^{1, 3}		-0.8	0.1	-0.7	0.1	0.1
Other bakery products.....	0.215	2.5	-0.2	-0.1	0.5	0.0
Fresh sweetrolls, coffeecakes, doughnuts ^{1, 3}		4.4	0.1	1.5	1.0	0.1
Crackers, bread, and cracker products ³		1.2	-1.7	-0.6	2.4	-2.4 ^f
Frozen and refrigerated bakery products, pies, tarts, turnovers ³		3.0	1.3	0.0	-2.3	2.2 ^f
Meats, poultry, fish, and eggs.....	1.743	4.6	-0.3	0.4	0.1	-0.2
Meats, poultry, and fish.....	1.645	5.0	-0.4	0.3	0.1	0.0
Meats.....	1.031	5.2	-0.3	0.6	0.1	0.1
Beef and veal.....	0.474	5.3	-0.4	0.7	0.1	-0.3
Uncooked ground beef ¹	0.175	5.3	-1.0	0.3	0.4	-1.0
Uncooked beef roasts ^{1, 2}	0.074	6.9	-0.4	-3.0	0.6	-0.4
Uncooked beef steaks ²	0.181	3.8	-0.1	1.6	-0.2	0.5
Uncooked other beef and veal ^{1, 2}	0.044	9.3	0.8	0.4	0.5	0.8
Pork.....	0.325	5.2	-0.7	1.3	0.0	0.8
Bacon, breakfast sausage, and related products ²	0.133	5.7	0.8	2.6	0.5	1.8
Bacon and related products ³		6.2	0.9	2.6	2.0	1.7 ^f
Breakfast sausage and related products ^{2, 3}		4.9	0.8	2.5	-1.9	1.6 ^f
Ham.....	0.064	1.4	-3.2	-0.5	-1.9	1.1
Ham, excluding canned ³		1.7	-3.4	-0.2	-1.9	1.4 ^f
Pork chops ¹	0.052	8.6	-0.9	-4.0	3.0	-0.9
Other pork including roasts, steaks, and ribs ²	0.076	5.5	-1.2	4.1	-2.0	-0.2
Other meats.....	0.233	4.9	0.3	-0.6	0.1	0.0
Frankfurters ³		9.1	2.1	1.1	-4.2	2.0 ^f
Lunchmeats ^{2, 3}		4.6	0.2	-0.2	-0.3	-0.1 ^f
Lamb and organ meats ^{1, 3}						
Lamb and mutton ^{1, 2, 3}						
Poultry ¹	0.336	4.3	-0.9	-0.4	0.0	-0.9
Chicken ^{1, 2}	0.275	4.0	-0.7	-0.1	1.1	-0.7
Fresh whole chicken ^{1, 3}		1.9	-1.0	-0.1	1.5	-1.0
Fresh and frozen chicken parts ^{1, 3}		4.9	-0.4	-0.5	1.1	-0.4
Other uncooked poultry including turkey ²	0.061	5.5	-1.9	-2.1	-1.9	-2.4
Fish and seafood.....	0.278	5.0	0.2	0.1	0.1	0.6
Fresh fish and seafood ²	0.139	5.1	0.8	0.2	-0.2	0.9
Processed fish and seafood ²	0.139	4.8	-0.4	-0.1	0.4	0.1
Shelf stable fish and seafood ^{1, 3}		5.5	-0.7	-0.9	1.6	-0.7

See footnotes at end of table.

Table 2. Consumer Price Index for All Urban Consumers (CPI-U): U.S. city average, by detailed expenditure category, December 2020 — Continued
 [1982-84=100, unless otherwise noted]

Expenditure category	Relative importance Nov. 2020	Unadjusted percent change		Seasonally adjusted percent change		
		Dec. 2019- Dec. 2020	Nov. 2020- Dec. 2020	Sep. 2020- Oct. 2020	Oct. 2020- Nov. 2020	Nov. 2020- Dec. 2020
Frozen fish and seafood ³		4.5	-0.8	1.0	-0.1	0.3 ^f
Eggs.....	0.098	-1.5	0.7	1.5	1.0	-3.5
Dairy and related products.....	0.785	4.4	1.0	-0.9	0.3	0.8
Milk ²	0.214	6.0	2.2	-2.5	0.3	1.7
Fresh whole milk ³		7.7	2.6	-2.8	0.6	2.3 ^f
Fresh milk other than whole ^{2, 3}		5.4	2.3	-2.5	-0.1	2.0 ^f
Cheese and related products ¹	0.265	3.8	0.4	0.0	-0.3	0.4
Ice cream and related products.....	0.110	4.0	0.7	-1.9	0.9	0.0
Other dairy and related products ^{1, 2}	0.196	3.8	0.5	0.2	-0.3	0.5
Fruits and vegetables.....	1.341	3.2	0.1	0.1	0.0	-0.2
Fresh fruits and vegetables.....	1.055	2.7	-0.1	0.2	-0.1	-0.4
Fresh fruits.....	0.543	1.4	-0.9	0.2	0.6	-0.2
Apples.....	0.073	0.2	0.3	3.0	-1.3	1.0
Bananas ¹	0.075	-4.0	-1.2	0.3	0.6	-1.2
Citrus fruits ²	0.144	2.6	-5.4	-1.6	5.8	-0.8
Oranges, including tangerines ³		1.9	-7.0	-3.1	6.7	0.2 ^f
Other fresh fruits ²	0.251	2.8	1.3	0.4	-1.3	-1.1
Fresh vegetables.....	0.512	4.2	0.7	0.2	-0.8	-0.5
Potatoes.....	0.075	-0.1	-0.2	2.2	-1.4	-0.4
Lettuce ¹	0.068	8.9	-0.4	7.2	3.0	-0.4
Tomatoes.....	0.082	4.5	0.3	1.3	-5.1	-2.6
Other fresh vegetables.....	0.286	4.1	1.4	-1.3	-0.1	0.8
Processed fruits and vegetables ²	0.286	4.8	0.7	-0.3	0.6	0.7
Canned fruits and vegetables ²	0.149	5.0	0.9	-0.6	1.9	0.4
Canned fruits ^{2, 3}		3.8	0.5	-0.1	1.9	-0.2 ^f
Canned vegetables ^{2, 3}		6.3	0.9	0.0	1.6	0.3 ^f
Frozen fruits and vegetables ²	0.086	5.1	-0.1	-0.2	-0.8	0.6
Frozen vegetables ³		4.4	-0.7	0.1	-0.4	-0.3 ^f
Other processed fruits and vegetables including dried ²	0.051	3.6	1.9	-1.2	-1.1	1.9
Dried beans, peas, and lentils ^{1, 2, 3}		4.6	2.1	-2.1	-1.0	2.1
Nonalcoholic beverages and beverage materials.....	0.923	4.4	0.9	-0.1	-0.9	1.1
Juices and nonalcoholic drinks ²	0.661	5.2	0.8	-0.1	-0.8	0.9
Carbonated drinks.....	0.276	7.1	1.0	1.0	-1.7	1.8
Frozen noncarbonated juices and drinks ^{1, 2}	0.006	1.0	1.6	0.8	-0.9	1.6
Nonfrozen noncarbonated juices and drinks ²	0.380	4.0	0.7	-0.6	-0.2	0.5
Beverage materials including coffee and tea ²	0.261	2.4	1.3	0.3	-1.0	1.5
Coffee.....	0.167	2.4	1.4	1.2	-1.8	1.8
Roasted coffee ³		2.5	1.1	1.2	-1.5	1.2 ^f
Instant coffee ^{1, 3}		1.7	4.2	1.6	-5.2	4.2
Other beverage materials including tea ^{1, 2}	0.094	2.6	1.0	-1.2	1.1	1.0
Other food at home.....	1.963	3.9	0.6	0.3	-0.6	0.7
Sugar and sweets ¹	0.269	4.6	0.5	0.6	-0.1	0.5
Sugar and sugar substitutes.....	0.038	9.4	-0.6	2.8	2.6	0.2
Candy and chewing gum ^{1, 2}	0.179	4.3	0.8	0.3	0.0	0.8
Other sweets ²	0.053	2.4	0.2	1.8	-0.6	1.0
Fats and oils.....	0.211	2.8	0.6	-0.5	0.0	0.7
Butter and margarine ²	0.062	1.7	1.5	-0.2	-2.2	2.1
Butter ³		-0.5	0.4	0.3	-2.8	1.9 ^f
Margarine ³		5.7	2.7	-1.1	-0.5	2.3 ^f
Salad dressing ²	0.051	2.3	1.4	-1.1	1.3	0.2
Other fats and oils including peanut butter ²	0.099	3.7	-0.3	-0.2	0.8	0.0
Peanut butter ^{1, 2, 3}		11.2	3.2	3.4	0.1	3.2
Other foods.....	1.482	3.9	0.6	0.3	-0.8	0.7

See footnotes at end of table.

Table 2. Consumer Price Index for All Urban Consumers (CPI-U): U.S. city average, by detailed expenditure category, December 2020 — Continued
 [1982-84=100, unless otherwise noted]

Expenditure category	Relative importance Nov. 2020	Unadjusted percent change		Seasonally adjusted percent change		
		Dec. 2019- Dec. 2020	Nov. 2020- Dec. 2020	Sep. 2020- Oct. 2020	Oct. 2020- Nov. 2020	Nov. 2020- Dec. 2020
Soups.....	0.088	6.7	2.1	-0.7	-1.2	1.7
Frozen and freeze dried prepared foods.....	0.258	4.9	0.3	-0.2	0.0	0.4
Snacks ¹	0.340	4.8	0.1	0.8	-0.9	0.1
Spices, seasonings, condiments, sauces.....	0.292	3.7	-0.6	1.0	0.0	-0.4
Salt and other seasonings and spices ^{2, 3}		5.1	1.8	1.1	1.7	2.2 ^f
Olives, pickles, relishes ^{1, 2, 3}		6.2	-0.4	0.4	-0.2	-0.4
Sauces and gravies ^{2, 3}		3.3	-1.4	0.9	-1.1	-1.5 ^f
Other condiments ³		1.3	-0.8	2.2	-1.4	-0.2 ^f
Baby food ^{1, 2}	0.043	2.8	-1.1	-0.6	1.4	-1.1
Other miscellaneous foods ²	0.461	2.4	1.7	0.4	-1.4	1.2
Prepared salads ^{1, 3, 4}		0.0	1.9	0.9	1.5	1.9
Food away from home ¹	6.330	3.9	0.4	0.3	0.1	0.4
Full service meals and snacks ^{1, 2}	3.170	3.0	0.3	0.3	0.3	0.3
Limited service meals and snacks ^{1, 2}	2.776	6.0	0.5	0.3	0.2	0.5
Food at employee sites and schools ²	0.130	-9.7	0.0	0.1	-6.4	-0.3
Food at elementary and secondary schools ^{1, 3, 5}		-14.2	0.1	0.1	-8.8	0.1
Food from vending machines and mobile vendors ^{1, 2}	0.080	0.7	0.1	-0.2	-0.1	0.1
Other food away from home ^{1, 2}	0.174	1.8	0.1	-0.7	0.1	0.1
Energy.....	6.044	-7.0	1.9	0.1	0.4	4.0
Energy commodities.....	2.919	-15.2	3.6	-0.5	-0.2	8.2
Fuel oil and other fuels.....	0.136	-13.3	6.7	0.4	2.4	5.8
Fuel oil.....	0.076	-20.0	10.2	-0.3	3.6	10.0
Propane, kerosene, and firewood ⁶	0.060	-2.0	2.3	0.9	0.2	1.2
Motor fuel.....	2.782	-15.3	3.4	-0.6	-0.4	8.3
Gasoline (all types).....	2.721	-15.2	3.4	-0.5	-0.4	8.4
Gasoline, unleaded regular ³		-15.6	3.7	-0.2	-0.7	8.8
Gasoline, unleaded midgrade ^{3, 7}		-13.1	2.6	-0.9	0.3	7.2
Gasoline, unleaded premium ³		-12.9	1.7	-1.2	0.2	6.1
Other motor fuels ²	0.061	-17.6	4.3	-2.8	-0.2	6.2
Energy services.....	3.125	2.6	0.4	0.8	1.1	0.1
Electricity.....	2.420	2.2	0.3	1.2	0.5	0.4
Utility (piped) gas service.....	0.705	4.1	0.9	-0.7	3.1	-0.8
All items less food and energy.....	79.874	1.6	-0.1	0.0	0.2	0.1
Commodities less food and energy commodities.....	20.279	1.7	-0.3	-0.2	0.1	0.2
Household furnishings and supplies ⁸	3.795	2.9	-0.2	-0.5	0.9	-0.1
Window and floor coverings and other linens ^{1, 2}	0.277	-1.8	-2.3	-1.5	-2.8	-2.3
Floor coverings ^{1, 2}	0.063	-1.5	-1.3	0.2	-0.4	-1.3
Window coverings ^{1, 2}	0.059	-0.3	-1.2	0.4	-2.5	-1.2
Other linens ^{1, 2}	0.156	-2.5	-3.0	-2.8	-3.8	-3.0
Furniture and bedding ¹	0.943	2.2	0.2	-0.4	0.8	0.2
Bedroom furniture ¹	0.329	-0.7	0.2	-0.4	1.7	0.2
Living room, kitchen, and dining room furniture ^{1, 2}	0.453	2.1	0.2	-0.4	0.1	0.2
Other furniture ^{1, 2}	0.151	9.4	0.5	-0.3	1.0	0.5
Infants' furniture ^{1, 3, 5}				-0.9		
Appliances ²	0.221	6.2	-0.4	0.4	2.2	-0.2
Major appliances ²	0.079	16.6	-1.4	2.8	3.4	-3.0
Laundry equipment ³		16.4	0.8	0.5	6.1	0.6 ^f
Other appliances ²	0.139	1.2	0.2	-0.5	1.3	1.2
Other household equipment and furnishings ²	0.537	1.0	-0.3	-2.5	0.2	1.1
Clocks, lamps, and decorator items ¹	0.316	1.6	-0.6	-1.4	1.1	-0.6
Indoor plants and flowers ⁹	0.091	4.2	2.3	0.6	-0.2	1.5
Dishes and flatware ^{1, 2}	0.053	-3.0	-2.9	-4.1	2.0	-2.9
Nonelectric cookware and tableware ²	0.077	-2.0	-0.3	-1.0	-2.0	0.6

See footnotes at end of table.

Table 2. Consumer Price Index for All Urban Consumers (CPI-U): U.S. city average, by detailed expenditure category, December 2020 — Continued
 [1982-84=100, unless otherwise noted]

Expenditure category	Relative importance Nov. 2020	Unadjusted percent change		Seasonally adjusted percent change		
		Dec. 2019- Dec. 2020	Nov. 2020- Dec. 2020	Sep. 2020- Oct. 2020	Oct. 2020- Nov. 2020	Nov. 2020- Dec. 2020
Tools, hardware, outdoor equipment and supplies ² . . .	0.891	3.7	0.2	-0.1	0.3	0.5
Tools, hardware and supplies ^{1, 2}	0.243	3.3	0.1	0.1	-1.9	0.1
Outdoor equipment and supplies ²	0.458	3.9	0.2	-0.2	1.5	0.4
Housekeeping supplies ¹	0.927	4.9	-0.4	0.5	1.2	-0.4
Household cleaning products ^{1, 2}	0.364	5.8	0.9	0.5	0.1	0.9
Household paper products ^{1, 2}	0.234	7.7	0.1	-0.1	4.0	0.1
Miscellaneous household products ^{1, 2}	0.328	1.9	-2.4	1.0	0.3	-2.4
Apparel	2.716	-3.9	-1.9	-1.2	0.9	1.4
Men's and boys' apparel	0.678	-3.2	-1.6	-3.0	2.1	2.3
Men's apparel	0.543	-2.6	-1.9	-3.5	2.0	2.4
Men's suits, sport coats, and outerwear	0.089	-13.4	-1.4	-6.3	2.2	4.6
Men's underwear, nightwear, swimwear, and accessories ¹	0.163	3.2	-2.6	-2.5	-2.4	-2.6
Men's shirts and sweaters ²	0.153	-4.0	-1.8	-2.9	3.7	4.8
Men's pants and shorts	0.132	0.8	-1.5	-1.3	1.9	0.7
Boys' apparel	0.135	-5.5	-0.4	-1.1	1.3	2.3
Women's and girls' apparel	1.103	-5.9	-2.4	-0.9	0.0	1.4
Women's apparel	0.905	-7.7	-3.2	-0.4	-0.6	1.2
Women's outerwear	0.064	-6.6	-3.6	1.4	-1.8	3.0
Women's dresses	0.095	-11.2	-2.5	0.7	3.1	3.2
Women's suits and separates ²	0.460	-8.8	-2.9	-0.5	-2.7	2.1
Women's underwear, nightwear, swimwear, and accessories ²	0.276	-4.6	-3.8	-1.0	1.2	-1.2
Girls' apparel	0.198	2.8	1.0	-3.6	2.7	2.3
Footwear	0.655	-2.2	-1.5	1.1	1.4	0.3
Men's footwear ¹	0.228	-2.2	-1.6	0.4	-1.1	-1.6
Boys' and girls' footwear	0.139	-1.6	-2.3	3.7	5.5	-1.2
Women's footwear	0.287	-2.4	-1.0	0.5	0.8	1.1
Infants' and toddlers' apparel	0.127	-5.4	-1.8	-3.4	3.5	-0.8
Jewelry and watches ⁶	0.154	1.1	-0.5	-2.3	-1.3	2.8
Watches ^{1, 6}	0.039	6.2	1.7	0.3	-0.9	1.7
Jewelry ⁶	0.115	-0.6	-1.3	-1.1	-2.9	2.1
Transportation commodities less motor fuel ⁸	7.148	5.0	0.0	0.2	-0.6	-0.2
New vehicles	3.734	2.0	0.7	0.4	-0.1	0.4
New cars and trucks ^{2, 3}		2.0	0.7	0.4	-0.1	0.4 ^f
New cars ³		2.1	0.7	0.1	-0.1	0.5 ^f
New trucks ^{3, 10}		1.9	0.6	0.7	0.0	0.4 ^f
Used cars and trucks	2.778	10.0	-0.9	-0.1	-1.3	-1.2
Motor vehicle parts and equipment ¹	0.391	0.4	0.6	-0.3	-0.2	0.6
Tires ¹	0.248	0.2	0.7	0.3	-0.4	0.7
Vehicle accessories other than tires ^{1, 2}	0.144	0.8	0.4	-1.4	0.2	0.4
Vehicle parts and equipment other than tires ^{1, 3}		0.8	-0.1	-2.0	0.0	-0.1
Motor oil, coolant, and fluids ^{1, 3}		-5.0	1.2	-2.0	0.7	1.2
Medical care commodities	1.586	-2.5	-0.2	-0.8	-0.3	-0.4
Medicinal drugs ⁸	1.520	-2.1	-0.2	-0.8	-0.1	-0.2
Prescription drugs	1.144	-2.4	-0.2	-0.4	-0.1	-0.4
Nonprescription drugs ^{1, 8}	0.376	-1.4	-0.4	-1.3	0.1	-0.4
Medical equipment and supplies ^{1, 8}	0.066	-10.0	-0.2	-1.4	-5.3	-0.2
Recreation commodities ⁸	2.007	-0.2	0.1	-0.1	0.3	0.2
Video and audio products ⁸	0.270	-0.8	-0.4	0.0	-0.5	0.3
Televisions	0.092	-4.9	-0.4	-0.4	1.1	0.7
Other video equipment ²	0.042	1.8	0.3	-0.4	-1.9	2.5
Audio equipment ¹	0.079	2.0	-0.3	1.0	-1.6	-0.3
Recorded music and music subscriptions ^{1, 2}	0.046	-0.3	-1.2	-1.0	-0.5	-1.2

See footnotes at end of table.

Table 2. Consumer Price Index for All Urban Consumers (CPI-U): U.S. city average, by detailed expenditure category, December 2020 — Continued
 [1982-84=100, unless otherwise noted]

Expenditure category	Relative importance Nov. 2020	Unadjusted percent change		Seasonally adjusted percent change		
		Dec. 2019- Dec. 2020	Nov. 2020- Dec. 2020	Sep. 2020- Oct. 2020	Oct. 2020- Nov. 2020	Nov. 2020- Dec. 2020
Pets and pet products ¹	0.629	-1.8	0.5	-0.8	0.9	0.5
Pet food ^{1, 2, 3}		-0.7	0.0	-0.4	0.8	0.0
Purchase of pets, pet supplies, accessories ^{1, 2, 3}		-3.3	1.1	-1.4	1.1	1.1
Sporting goods.....	0.600	2.5	0.7	0.3	0.7	0.5
Sports vehicles including bicycles ¹	0.365	1.3	-0.8	1.7	0.5	-0.8
Sports equipment.....	0.225	4.3	3.2	-1.5	0.7	3.6
Photographic equipment and supplies.....	0.027	5.4	-1.5	-0.3	0.4	2.2
Film and photographic supplies ^{1, 2, 3}						
Photographic equipment ^{2, 3}		6.7	-0.4	-1.0	0.8	3.7 ^r
Recreational reading materials ¹	0.120	4.6	0.7	1.1	0.1	0.7
Newspapers and magazines ^{1, 2}	0.068	4.6	0.2	0.3	1.0	0.2
Recreational books ^{1, 2}	0.050	4.7	1.2	2.2	-1.0	1.2
Other recreational goods ²	0.361	-3.4	-1.3	-0.1	-0.4	-1.2
Toys.....	0.276	-3.7	-0.3	0.3	-0.4	-0.3
Toys, games, hobbies and playground equipment ^{1, 3}		-0.8	-0.1	1.5	-0.7	0.0 ^r
Sewing machines, fabric and supplies ^{1, 2}	0.022	-7.6	-10.4	-4.6	0.2	-10.4
Music instruments and accessories ^{1, 2}	0.047	0.0	-2.4	-0.2	-0.8	-2.4
Education and communication commodities ⁸	0.500	-2.5	0.3	-0.2	0.4	0.8
Educational books and supplies.....	0.109	0.7	0.7	0.3	-0.5	0.5
College textbooks ^{1, 3, 11}		0.1	0.8	-0.1	-0.4	0.8
Information technology commodities ⁸	0.392	-3.3	0.2	-0.4	0.6	0.8
Computers, peripherals, and smart home assistants ⁴	0.294	0.8	0.9	-0.5	2.2	1.8
Computer software and accessories ^{1, 2}	0.018	-5.1	1.7	0.7	4.6	1.7
Telephone hardware, calculators, and other consumer information items ²	0.080	-16.3	-2.8	-0.1	-5.6	-3.0
Alcoholic beverages.....	1.041	2.8	-0.2	0.3	0.4	0.0
Alcoholic beverages at home.....	0.583	2.8	-0.4	0.4	0.3	-0.2
Beer, ale, and other malt beverages at home.....	0.225	3.0	-0.7	-0.2	0.6	-0.6
Distilled spirits at home.....	0.094	3.0	0.1	-0.1	0.3	0.5
Whiskey at home ^{1, 3}		3.3	-0.3	0.1	0.1	-0.3
Distilled spirits, excluding whiskey, at home ^{1, 3}		3.1	0.2	-0.1	-0.1	0.2
Wine at home.....	0.264	2.6	-0.4	1.0	0.3	0.0
Alcoholic beverages away from home ¹	0.458	2.8	0.0	0.3	0.6	0.0
Beer, ale, and other malt beverages away from home ^{1, 2, 3}		2.5	0.5	-0.6	0.9	0.5
Wine away from home ^{1, 2, 3}		2.8	0.1	0.3	0.4	0.1
Distilled spirits away from home ^{1, 2, 3}		5.9	-0.3	1.3	0.7	-0.3
Other goods ⁸	1.485	1.8	0.0	-0.1	0.4	0.3
Tobacco and smoking products.....	0.605	5.1	0.6	-0.2	0.3	1.0
Cigarettes ²	0.526	5.4	0.7	-0.3	0.2	1.1
Tobacco products other than cigarettes ^{1, 2}	0.060	2.1	-0.1	0.5	0.2	-0.1
Personal care products ¹	0.683	-0.3	-0.6	-0.1	0.0	-0.6
Hair, dental, shaving, and miscellaneous personal care products ^{1, 2}	0.367	-0.4	-0.8	-0.4	-0.4	-0.8
Cosmetics, perfume, bath, nail preparations and implements ¹	0.307	-0.2	-0.3	0.3	0.5	-0.3
Miscellaneous personal goods ²	0.197	-0.2	-0.1	0.2	2.3	1.2
Stationery, stationery supplies, gift wrap ³		-0.2	-0.7	3.6	2.8	-0.5 ^r
Infants' equipment ^{1, 3, 5}		22.3	3.2	0.4	0.1	3.2
Services less energy services.....	59.595	1.6	0.0	0.1	0.2	0.1
Shelter.....	33.320	1.8	0.1	0.1	0.1	0.1
Rent of shelter ¹²	32.954	1.9	0.1	0.0	0.2	0.1
Rent of primary residence.....	7.860	2.3	0.1	0.2	0.0	0.1

See footnotes at end of table.

Table 2. Consumer Price Index for All Urban Consumers (CPI-U): U.S. city average, by detailed expenditure category, December 2020 — Continued
 [1982-84=100, unless otherwise noted]

Expenditure category	Relative importance Nov. 2020	Unadjusted percent change		Seasonally adjusted percent change		
		Dec. 2019- Dec. 2020	Nov. 2020- Dec. 2020	Sep. 2020- Oct. 2020	Oct. 2020- Nov. 2020	Nov. 2020- Dec. 2020
Lodging away from home ²	0.841	-9.5	-1.8	-3.2	3.9	0.0
Housing at school, excluding board ¹²	0.118	2.1	0.0	0.3	0.1	0.1
Other lodging away from home including hotels and motels.....	0.722	-11.2	-2.1	-3.7	4.5	0.0
Owners' equivalent rent of residences ¹²	24.253	2.2	0.1	0.2	0.0	0.1
Owners' equivalent rent of primary residence ¹² ..	23.035	2.2	0.1	0.2	0.0	0.1
Tenants' and household insurance ^{1, 2}	0.366	0.1	0.1	0.2	0.3	0.1
Water and sewer and trash collection services ²	1.105	3.6	0.3	0.2	0.3	0.4
Water and sewerage maintenance.....	0.810	3.3	0.2	0.2	0.2	0.4
Garbage and trash collection ^{1, 10}	0.295	4.4	0.6	0.3	0.3	0.6
Household operations ^{1, 2}	0.883	4.1	2.0	0.3	-0.4	2.0
Domestic services ^{1, 2}	0.293	5.2	3.2	1.2	-1.1	3.2
Gardening and lawn care services ^{1, 2}						
Moving, storage, freight expense ^{1, 2}	0.092	6.0	-0.5	-0.9	0.3	-0.5
Repair of household items ^{1, 2}						
Medical care services.....	7.311	2.8	-0.2	-0.3	-0.1	-0.1
Professional services.....	3.667	1.9	0.0	0.1	0.0	0.0
Physicians' services.....	1.821	1.7	-0.1	0.0	0.1	0.0
Dental services.....	1.005	2.9	0.1	0.3	0.1	0.2
Eyeglasses and eye care ^{1, 6}	0.366	0.4	-0.1	-0.1	-0.5	-0.1
Services by other medical professionals ^{1, 6}	0.474	1.3	0.0	0.0	-0.1	0.0
Hospital and related services.....	2.420	3.1	0.0	-0.5	0.4	0.3
Hospital services ¹³	2.223	3.0	0.0	-0.6	0.3	0.3
Inpatient hospital services ^{13, 3}		2.1	-0.1	-0.5	0.3	0.2
Outpatient hospital services ^{3, 6}		2.3	0.0	-0.6	0.4	0.2
Nursing homes and adult day services ¹³	0.125	2.9	-0.1	0.3	0.4	0.1
Care of invalids and elderly at home ^{1, 5}	0.073	7.4	0.2	2.6	0.2	0.2
Health insurance ^{1, 5}	1.224	4.8	-1.1	-1.2	-1.0	-1.1
Transportation services.....	5.189	-3.5	-0.8	0.1	1.8	-0.1
Leased cars and trucks ^{1, 11}						
Car and truck rental ²	0.139	5.3	-3.6	7.4	4.4	-5.6
Motor vehicle maintenance and repair ¹	1.100	3.4	0.0	0.1	0.4	0.0
Motor vehicle body work ¹	0.059	2.6	-0.1	0.1	-0.1	-0.1
Motor vehicle maintenance and servicing ¹	0.635	2.6	0.1	0.2	0.7	0.1
Motor vehicle repair ^{1, 2}	0.346	5.1	-0.1	0.0	0.1	-0.1
Motor vehicle insurance.....	1.577	-4.8	1.4	-2.3	1.1	1.4
Motor vehicle fees ^{1, 2}	0.567	0.1	-0.3	-0.2	-0.3	-0.3
State motor vehicle registration and license fees ^{1, 2}	0.297	1.3	0.0	0.0	0.1	0.0
Parking and other fees ^{1, 2}	0.256	-1.3	-0.6	-0.5	-0.7	-0.6
Parking fees and tolls ^{2, 3}		0.2	-0.7	-0.3	-0.1	-0.3 ^f
Automobile service clubs ^{1, 2, 3}		-0.6	-1.1	0.0	-0.4	-1.1
Public transportation.....	1.155	-12.0	-4.2	2.6	2.5	-0.7
Airline fares.....	0.687	-18.4	-7.8	6.3	3.5	-2.3
Other intercity transportation.....	0.178	2.5	2.7	1.4	3.2	1.7
Intercity bus fare ^{1, 3, 4}		12.8	0.0	-1.8	18.0	0.0
Intercity train fare ^{1, 3, 4}						
Ship fare ^{1, 2, 3}		1.3	3.8	1.4	2.6	3.8
Intracity transportation ¹	0.288	-4.3	-0.1	-4.1	-0.2	-0.1
Intracity mass transit ^{1, 3, 8}		-9.5	0.0	-9.3	-0.2	0.0
Recreation services ⁸	3.811	1.6	-0.5	0.7	0.5	-0.5
Video and audio services ⁸	1.264	3.4	0.5	0.3	-0.2	0.4
Cable and satellite television service ¹⁰	1.187	4.2	0.5	0.5	0.2	0.4

See footnotes at end of table.

Table 2. Consumer Price Index for All Urban Consumers (CPI-U): U.S. city average, by detailed expenditure category, December 2020 — Continued
 [1982-84=100, unless otherwise noted]

Expenditure category	Relative importance Nov. 2020	Unadjusted percent change		Seasonally adjusted percent change		
		Dec. 2019- Dec. 2020	Nov. 2020- Dec. 2020	Sep. 2020- Oct. 2020	Oct. 2020- Nov. 2020	Nov. 2020- Dec. 2020
Video discs and other media, including rental of video ^{1, 2}	0.077	-7.6	-0.2	-2.5	-5.3	-0.2
Video discs and other media ^{1, 2, 3}		-9.3	-0.7	-4.1	-6.1	-0.7
Rental of video discs and other media ^{1, 2, 3}		2.3	1.0	0.0	-0.6	1.0
Pet services including veterinary ²	0.560	3.0	0.2	0.6	0.2	0.1
Pet services ^{1, 2, 3}		1.7	0.1	0.8	-0.3	0.1
Veterinarian services ^{2, 3}		3.5	0.1	0.6	0.3	0.1 ^f
Photographers and photo processing ^{1, 2}	0.045	1.9	-1.9	0.6	-0.4	-1.9
Photographer fees ^{1, 2, 3}						
Photo processing ^{1, 2, 3}		-2.7	-5.6	3.2	-0.1	-5.6
Other recreation services ²	1.942	0.0	-1.2	1.0	1.1	-1.3
Club membership for shopping clubs, fraternal, or other organizations, or participant sports fees ^{1, 2}	0.688	-0.4	0.3	0.9	0.3	0.3
Admissions.....	0.712	-0.9	-3.2	1.0	1.8	-3.5
Admission to movies, theaters, and concerts ^{1, 2, 3}		1.2	0.2	0.1	0.8	0.2
Admission to sporting events ^{1, 2, 3}						
Fees for lessons or instructions ^{1, 6}	0.218	3.6	-0.1	0.8	1.5	-0.1
Education and communication services ⁹	6.315	2.3	0.0	0.1	0.0	0.1
Tuition, other school fees, and childcare.....	2.926	1.4	0.0	0.0	0.2	0.2
College tuition and fees.....	1.571	0.7	0.0	-0.1	0.1	0.2
Elementary and high school tuition and fees.....	0.431	2.3	0.0	0.1	0.2	0.3
Day care and preschool ⁹	0.768	2.2	0.1	0.2	0.2	0.3
Technical and business school tuition and fees ²	0.037	2.8	-0.1	0.6	0.2	0.1
Postage and delivery services ²	0.111	4.1	0.1	0.2	0.3	0.2
Postage.....	0.101	4.3	0.0	0.3	0.3	0.1
Delivery services ²	0.010	1.0	1.0	-0.5	0.6	1.5
Telephone services ^{1, 2}	2.373	4.2	-0.1	0.3	-0.1	-0.1
Wireless telephone services ^{1, 2}	1.963	4.1	-0.1	0.0	-0.2	-0.1
Land-line telephone services ^{1, 8}	0.410	4.6	0.1	1.9	0.2	0.1
Internet services and electronic information providers ²	0.893	0.4	0.1	-0.1	-0.1	-0.1
Other personal services ^{1, 8}	1.662	2.9	0.9	-0.1	-0.3	0.9
Personal care services ¹	0.688	5.6	1.0	0.4	0.1	1.0
Haircuts and other personal care services ^{1, 2}	0.688	5.6	1.0	0.4	0.1	1.0
Miscellaneous personal services.....	0.974	1.1	0.8	-0.4	-0.6	0.9
Legal services ^{1, 6}	0.250	1.3	0.0	-0.1	0.0	0.0
Funeral expenses ^{1, 6}	0.140	1.0	0.1	0.0	0.1	0.1
Laundry and dry cleaning services ^{1, 2}	0.220	1.8	0.4	-0.1	0.3	0.4
Apparel services other than laundry and dry cleaning ^{1, 2}	0.030	3.6	0.4	-0.2	-0.6	0.4
Financial services ⁶	0.223	-0.1	2.8	-1.1	-2.5	2.8
Checking account and other bank services ^{1, 2, 3}		-2.1	8.5	-3.2	-8.3	8.5
Tax return preparation and other accounting fees ^{1, 2, 3}		1.6	-0.6	0.0	0.4	-0.6

¹ Not seasonally adjusted.

² Indexes on a December 1997=100 base.

³ Special index based on a substantially smaller sample.

⁴ Indexes on a December 2007=100 base.

⁵ Indexes on a December 2005=100 base.

⁶ Indexes on a December 1986=100 base.

⁷ Indexes on a December 1993=100 base.

⁸ Indexes on a December 2009=100 base.

⁹ Indexes on a December 1990=100 base.

¹⁰ Indexes on a December 1983=100 base.

¹¹ Indexes on a December 2001=100 base.

¹² Indexes on a December 1982=100 base.

¹³ Indexes on a December 1996=100 base.

r Revised

Table 3. Consumer Price Index for All Urban Consumers (CPI-U): U.S. city average, special aggregate indexes, December 2020

[1982-84=100, unless otherwise noted]

Special aggregate indexes	Relative importance Nov. 2020	Unadjusted indexes			Unadjusted percent change		Seasonally adjusted percent change		
		Dec. 2019	Nov. 2020	Dec. 2020	Dec. 2019- Dec. 2020	Nov. 2020- Dec. 2020	Sep. 2020- Oct. 2020	Oct. 2020- Nov. 2020	Nov. 2020- Dec. 2020
All items less food.....	85.918	256.516	258.826	258.959	1.0	0.1	0.0	0.2	0.4
All items less shelter.....	66.680	234.656	237.052	237.289	1.1	0.1	0.0	0.2	0.5
All items less food and shelter.....	52.598	228.109	228.936	229.010	0.4	0.0	0.0	0.3	0.5
All items less food, shelter, and energy.....	46.554	233.426	237.342	236.831	1.5	-0.2	-0.1	0.3	0.1
All items less food, shelter, energy, and used cars and trucks.....	43.776	239.454	242.169	241.759	1.0	-0.2	-0.1	0.4	0.1
All items less medical care.....	91.104	244.861	247.790	248.096	1.3	0.1	0.1	0.2	0.4
All items less energy.....	93.956	263.450	268.680	268.613	2.0	0.0	0.0	0.2	0.1
Commodities.....	37.280	184.441	185.594	186.063	0.9	0.3	-0.1	0.0	0.9
Commodities less food, energy, and used cars and trucks.....	17.501	144.230	145.197	144.915	0.5	-0.2	-0.3	0.3	0.4
Commodities less food.....	23.198	151.332	149.704	149.989	-0.9	0.2	-0.3	0.0	1.2
Commodities less food and beverages.....	22.157	147.899	146.034	146.342	-1.1	0.2	-0.3	0.0	1.2
Services.....	62.720	328.603	334.031	334.030	1.7	0.0	0.1	0.3	0.1
Services less rent of shelter ¹	29.766	346.068	351.287	350.968	1.4	-0.1	0.2	0.5	0.0
Services less medical care services.....	55.409	311.903	316.523	316.606	1.5	0.0	0.2	0.3	0.1
Durables.....	10.944	103.695	107.612	107.691	3.9	0.1	0.4	-0.1	0.0
Nondurables.....	26.336	226.120	224.697	225.432	-0.3	0.3	-0.1	0.1	1.4
Nondurables less food.....	12.254	197.719	187.750	188.305	-4.8	0.3	-0.4	0.0	2.5
Nondurables less food and beverages.....	11.213	194.325	183.195	183.826	-5.4	0.3	-0.5	0.0	2.7
Nondurables less food, beverages, and apparel.....	8.496	245.365	228.608	231.006	-5.9	1.0	-0.3	-0.2	3.0
Nondurables less food and apparel.....	9.537	244.816	230.503	232.599	-5.0	0.9	-0.3	-0.1	2.7
Housing.....	42.364	268.236	273.290	273.684	2.0	0.1	0.1	0.3	0.2
Education and communication ²	6.815	138.839	141.534	141.549	2.0	0.0	0.1	0.0	0.1
Education ²	3.035	268.700	272.359	272.437	1.4	0.0	0.0	0.1	0.2
Communication ²	3.781	73.541	75.313	75.311	2.4	0.0	0.1	0.0	0.0
Information and information processing ²	3.669	69.532	71.176	71.171	2.4	0.0	0.1	0.0	0.0
Information technology, hardware and services ³	1.296	7.347	7.280	7.288	-0.8	0.1	-0.2	0.1	0.2
Recreation ²	5.818	121.545	123.016	122.692	0.9	-0.3	0.4	0.4	-0.3
Video and audio ²	1.534	105.427	107.882	108.207	2.6	0.3	0.2	-0.2	0.4
Pets, pet products and services ²	1.189	180.308	180.412	181.066	0.4	0.4	-0.2	0.5	0.3
Photography ²	0.073	72.665	76.341	74.997	3.2	-1.8	0.3	-0.1	-0.4
Food and beverages.....	15.123	259.403	268.539	269.383	3.8	0.3	0.2	-0.1	0.3
Domestically produced farm food.....	6.477	249.635	258.692	259.404	3.9	0.3	0.1	-0.1	0.2
Other services.....	11.788	363.215	371.190	371.076	2.2	0.0	0.3	0.1	0.0
Apparel less footwear.....	2.062	110.983	108.165	106.018	-4.5	-2.0	-1.9	0.8	1.7
Fuels and utilities.....	4.366	241.788	245.807	247.236	2.3	0.6	0.6	0.9	0.4
Household energy.....	3.261	198.426	200.670	202.017	1.8	0.7	0.8	1.1	0.4
Medical care.....	8.896	509.689	519.848	518.766	1.8	-0.2	-0.4	-0.1	-0.2
Transportation.....	15.120	208.482	202.828	203.560	-2.4	0.4	0.0	0.3	1.4
Private transportation.....	13.965	204.610	200.039	201.523	-1.5	0.7	-0.2	0.1	1.6
New and used motor vehicles ²	7.547	98.495	103.442	103.242	4.8	-0.2	0.4	0.0	-0.4
Utilities and public transportation.....	8.945	217.864	221.306	220.601	1.3	-0.3	1.0	0.8	-0.2
Household furnishings and operations.....	4.678	123.462	127.134	127.367	3.2	0.2	-0.3	0.7	0.2
Other goods and services.....	3.147	455.413	464.211	466.332	2.4	0.5	0.0	0.0	0.5
Personal care.....	2.542	235.310	238.477	239.497	1.8	0.4	0.0	-0.1	0.4

¹ Indexes on a December 1982=100 base.

² Indexes on a December 1997=100 base.

³ Indexes on a December 1988=100 base.

Table 4. Consumer Price Index for All Urban Consumers (CPI-U): Selected areas, all items index, December 2020

[1982-84=100, unless otherwise noted]

Area	Pricing Schedule ¹	Percent change to Dec. 2020 from:			Percent change to Nov. 2020 from:		
		Dec. 2019	Oct. 2020	Nov. 2020	Nov. 2019	Sep. 2020	Oct. 2020
U.S. city average.....	M	1.4	0.0	0.1	1.2	0.0	-0.1
Region and area size²							
Northeast.....	M	1.4	0.3	0.2	1.1	-0.1	0.1
Northeast - Size Class A.....	M	1.4	0.2	0.3	1.1	-0.2	-0.1
Northeast - Size Class B/C ³	M	1.5	0.5	0.2	1.1	0.0	0.3
New England ⁴	M	0.8	0.7	0.3	0.4	-0.1	0.5
Middle Atlantic ⁴	M	1.6	0.2	0.2	1.3	-0.2	-0.1
Midwest.....	M	1.1	-0.1	0.1	1.0	-0.2	-0.2
Midwest - Size Class A.....	M	1.0	-0.3	0.0	1.0	-0.4	-0.3
Midwest - Size Class B/C ³	M	1.2	0.0	0.1	1.1	-0.1	-0.1
East North Central ⁴	M	0.8	-0.3	0.0	0.8	-0.4	-0.3
West North Central ⁴	M	1.8	0.3	0.1	1.5	0.1	0.1
South.....	M	1.4	0.1	0.2	1.2	0.0	-0.1
South - Size Class A.....	M	1.2	0.0	0.1	1.0	0.0	-0.1
South - Size Class B/C ³	M	1.5	0.1	0.2	1.3	0.1	-0.1
South Atlantic ⁴	M	1.6	0.0	0.1	1.6	0.1	-0.1
East South Central ⁴	M	1.7	0.3	0.5	1.2	0.1	-0.1
West South Central ⁴	M	0.8	0.1	0.3	0.4	-0.2	-0.2
West.....	M	1.5	-0.1	-0.1	1.4	0.2	0.0
West - Size Class A.....	M	1.5	0.0	-0.1	1.2	0.2	0.0
West - Size Class B/C ³	M	1.5	-0.2	-0.1	1.6	0.1	0.0
Mountain ⁴	M	1.0	-0.2	-0.2	1.3	0.0	0.0
Pacific ⁴	M	1.6	-0.1	-0.1	1.4	0.2	0.0
Size classes							
Size Class A ⁵	M	1.3	0.0	0.1	1.1	-0.1	-0.1
Size Class B/C ³	M	1.4	0.1	0.1	1.3	0.0	0.0
Selected local areas							
Chicago-Naperville-Elgin, IL-IN-WI.....	M	0.9	-0.5	-0.2	0.8	-0.5	-0.4
Los Angeles-Long Beach-Anaheim, CA.....	M	1.5	-0.1	-0.2	1.0	0.3	0.1
New York-Newark-Jersey City, NY-NJ-PA.....	M	1.6	0.1	0.4	1.4	-0.4	-0.3
Atlanta-Sandy Springs-Roswell, GA.....	2	1.6	0.1				
Baltimore-Columbia-Towson, MD ⁶	2	1.4	0.2				
Detroit-Warren-Dearborn, MI.....	2	0.7	-0.3				
Houston-The Woodlands-Sugar Land, TX.....	2	0.7	0.2				
Miami-Fort Lauderdale-West Palm Beach, FL.....	2	1.1	-0.2				
Philadelphia-Camden-Wilmington, PA-NJ-DE-MD.....	2	1.1	0.0				
Phoenix-Mesa-Scottsdale, AZ ⁷	2	0.5	-0.8				
San Francisco-Oakland-Hayward, CA.....	2	2.0	0.4				
Seattle-Tacoma-Bellevue, WA.....	2	1.4	-0.4				
St. Louis, MO-IL.....	2	1.2	0.1				
Urban Alaska.....	2	0.3	-0.5				
Boston-Cambridge-Newton, MA-NH.....	1				0.4	0.4	
Dallas-Fort Worth-Arlington, TX.....	1				0.3	-0.5	
Denver-Aurora-Lakewood, CO.....	1				0.3	-0.7	
Minneapolis-St. Paul-Bloomington, MN-WI.....	1				1.7	-0.4	
Riverside-San Bernardino-Ontario, CA ⁴	1				1.9	0.4	
San Diego-Carlsbad, CA.....	1				1.6	0.6	
Tampa-St. Petersburg-Clearwater, FL ⁸	1				3.2	0.1	
Urban Hawaii.....	1				1.6	-0.2	
Washington-Arlington-Alexandria, DC-VA-MD-WV ⁶	1				1.4	0.0	

¹ Foods, fuels, and several other items are priced every month in all areas. Most other goods and services are priced as indicated: M - Every month.

¹ 1 - January, March, May, July, September, and November. 2 - February, April, June, August, October, and December.

² Regions defined as the four Census regions.

³ Indexes on a December 1996=100 base.

⁴ Indexes on a December 2017=100 base.

⁵ Indexes on a December 1986=100 base.

⁶ 1998 - 2017 indexes based on substantially smaller sample.

⁷ Indexes on a December 2001=100 base.

⁸ Indexes on a 1987=100 base.

NOTE: Local area indexes are byproducts of the national CPI program. Each local index has a smaller sample size than the national index and is, therefore, subject to substantially more sampling and other measurement error. As a result, local area indexes show greater volatility than the national index, although their long-term trends are similar. Therefore, the Bureau of Labor Statistics strongly urges users to consider adopting the national average CPI for use in their escalator clauses.

Table 5. Chained Consumer Price Index for All Urban Consumers (C-CPI-U) and the Consumer Price Index for All Urban Consumers (CPI-U): U.S. city average, all items index, December 2020
 [Percent changes]

Month Year	Unadjusted 1-month percent change		Unadjusted 12-month percent change	
	C-CPI-U ¹	CPI-U	C-CPI-U ¹	CPI-U
December 2007.....			3.7	4.1
December 2008.....			0.2	0.1
December 2009.....			2.5	2.7
December 2010.....			1.3	1.5
December 2011.....			2.9	3.0
December 2012.....			1.5	1.7
December 2013.....			1.3	1.5
December 2014.....			0.5	0.8
December 2015.....			0.4	0.7
December 2016.....			1.8	2.1
December 2017.....			1.7	2.1
January 2018.....	0.5	0.5	1.6	2.1
February 2018.....	0.4	0.5	1.7	2.2
March 2018.....	0.2	0.2	1.9	2.4
April 2018.....	0.4	0.4	2.1	2.5
May 2018.....	0.3	0.4	2.3	2.8
June 2018.....	0.1	0.2	2.4	2.9
July 2018.....	0.0	0.0	2.6	2.9
August 2018.....	0.0	0.1	2.3	2.7
September 2018.....	0.1	0.1	1.9	2.3
October 2018.....	0.1	0.2	2.1	2.5
November 2018.....	-0.3	-0.3	1.8	2.2
December 2018.....	-0.4	-0.3	1.5	1.9
January 2019.....	0.2	0.2	1.3	1.6
February 2019.....	0.4	0.4	1.3	1.5
March 2019.....	0.5	0.6	1.5	1.9
April 2019.....	0.4	0.5	1.6	2.0
May 2019.....	0.2	0.2	1.4	1.8
June 2019.....	0.0	0.0	1.3	1.6
July 2019.....	0.1	0.2	1.5	1.8
August 2019.....	0.0	0.0	1.5	1.7
September 2019.....	0.0	0.1	1.4	1.7
October 2019.....	0.1	0.2	1.4	1.8
November 2019.....	-0.1	-0.1	1.6	2.1
December 2019.....	-0.2	-0.1	1.8	2.3
January 2020.....	0.4	0.4	2.0	2.5
February 2020.....	0.3	0.3	1.8	2.3
March 2020.....	-0.3	-0.2	1.1	1.5
April 2020.....	-0.8	-0.7	-0.2	0.3
May 2020.....	0.0	0.0	-0.4	0.1
June 2020.....	0.6	0.5	0.2	0.6
July 2020.....	0.5	0.5	0.6	1.0
August 2020.....	0.3	0.3	0.9	1.3
September 2020.....	0.2	0.1	1.0	1.4
October 2020.....	0.0	0.0	0.9	1.2
November 2020.....	-0.1	-0.1	0.9	1.2
December 2020.....	0.1	0.1	1.2	1.4

¹ The C-CPI-U is designed to be a closer approximation to a cost-of-living index in that it, in its final form, accounts for any substitution that consumers make across item categories in response to changes in relative prices. Since the expenditure data required for the calculation of the C-CPI-U are available only with a time lag, the C-CPI-U is issued first in preliminary form using the latest available expenditure data at that time and is subject to four revisions.

Indexes are issued as initial estimates. Indexes are revised each quarter with the publication of January, April, July, and October data as updated expenditure estimates become available. The C-CPI-U indexes are updated quarterly until they become final. January-March indexes are final in January of the following year; April-June indexes are final in April of the following year; July-September indexes are final in July of the following year; October-December indexes are final in October of the following year.

Table 6. Consumer Price Index for All Urban Consumers (CPI-U): U.S. city average, by expenditure category, December 2020, 1-month analysis table
 [1982-84=100, unless otherwise noted]

Expenditure category	Relative importance Nov. 2020	One Month				
		Seasonally adjusted percent change Nov. 2020-Dec. 2020	Seasonally adjusted effect on All Items Nov. 2020-Dec. 2020 ¹	Standard error, median price change ²	Largest (L) or Smallest (S) seasonally adjusted change since: ³	
					Date	Percent change
All items.....	100.000	0.4		0.04	L-Aug.2020	0.4
Food.....	14.082	0.4	0.052	0.07	L-Jun.2020	0.6
Food at home.....	7.753	0.4	0.029	0.12	L-Jun.2020	0.7
Cereals and bakery products.....	0.999	0.4	0.004	0.30	L-Jun.2020	0.4
Cereals and cereal products.....	0.306	0.6	0.002	0.54	L-Sep.2020	0.8
Flour and prepared flour mixes.....	0.041	0.0	0.000	0.83	S-Sep.2020	-0.5
Breakfast cereal ⁴	0.141	1.0	0.001	0.74	L-Sep.2020	2.0
Rice, pasta, cornmeal ⁴	0.124	0.7	0.001	0.98	L-May 2020	1.8
Rice ^{4, 5, 6}		0.0		1.14	S-Oct.2020	-0.6
Bakery products ⁴	0.693	0.1	0.001	0.36	L-Oct.2020	0.3
Bread ^{4, 5}	0.200	0.2	0.000	0.74	L-Oct.2020	0.7
White bread ^{4, 6}		0.0		1.01	L-Oct.2020	0.7
Bread other than white ^{4, 6}		0.7		0.77	L-Oct.2020	0.8
Fresh biscuits, rolls, muffins ⁵	0.101	0.2	0.000	0.96	L-Aug.2020	1.3
Cakes, cupcakes, and cookies.....	0.178	1.2	0.002	0.71	L-Jun.2020	1.8
Cookies ^{4, 6}		0.7		1.07	L-Oct.2020	2.1
Fresh cakes and cupcakes ^{4, 6}		0.1		0.78	-	-
Other bakery products.....	0.215	0.0	0.000	0.52	S-Oct.2020	-0.1
Fresh sweetrolls, coffeecakes, doughnuts ^{4, 6}		0.1		0.83	S-Sep.2020	-2.0
Crackers, bread, and cracker products ⁶		-2.4 ^r		0.94	S-Jan.2020	-3.1
Frozen and refrigerated bakery products, pies, tarts, turnovers ⁵		2.2 ^r		0.75	L-Feb.2020	2.2
Meats, poultry, fish, and eggs.....	1.743	-0.2	-0.004	0.23	S-Sep.2020	-0.4
Meats, poultry, and fish.....	1.645	0.0	0.000	0.24	S-Sep.2020	-0.3
Meats.....	1.031	0.1	0.001	0.29	-	-
Beef and veal.....	0.474	-0.3	-0.001	0.45	S-Sep.2020	-0.6
Uncooked ground beef ⁴	0.175	-1.0	-0.002	0.75	S-Sep.2020	-1.9
Uncooked beef roasts ^{4, 5}	0.074	-0.4	0.000	1.31	S-Oct.2020	-3.0
Uncooked beef steaks ⁵	0.181	0.5	0.001	0.70	L-Oct.2020	1.6
Uncooked other beef and veal ^{4, 5}	0.044	0.8	0.000	0.75	L-Jun.2020	5.1
Pork.....	0.325	0.8	0.003	0.61	L-Oct.2020	1.3
Bacon, breakfast sausage, and related products ⁵	0.133	1.8	0.002	0.83	L-Oct.2020	2.6
Bacon and related products ⁶		1.7 ^r		0.99	S-Sep.2020	0.2
Breakfast sausage and related products ^{5, 6}		1.6 ^r		1.20	L-Oct.2020	2.5
Ham.....	0.064	1.1	0.001	1.81	L-May 2020	3.4
Ham, excluding canned ⁶		1.4 ^r		1.73	L-May 2020	4.2
Pork chops ⁴	0.052	-0.9	0.000	1.57	S-Oct.2020	-4.0
Other pork including roasts, steaks, and ribs ⁵	0.076	-0.2	0.000	1.30	L-Oct.2020	4.1
Other meats.....	0.233	0.0	0.000	0.54	S-Oct.2020	-0.6
Frankfurters ⁶		2.0 ^r		1.31	L-Jul.2020	2.4
Lunchmeats ^{5, 6}		-0.1 ^r		0.59	L-Sep.2020	0.3
Lamb and organ meats ^{4, 6}						
Lamb and mutton ^{4, 5, 6}						
Poultry ⁴	0.336	-0.9	-0.003	0.63	S-Jul.2020	-2.1
Chicken ^{4, 5}	0.275	-0.7	-0.002	0.70	S-Jul.2020	-2.6
Fresh whole chicken ^{4, 6}		-1.0		1.43	S-Sep.2020	-2.2
Fresh and frozen chicken parts ^{4, 6}		-0.4		0.77	S-Oct.2020	-0.5
Other uncooked poultry including turkey ⁵	0.061	-2.4	-0.001	1.43	S-Dec.2018	-2.4
Fish and seafood.....	0.278	0.6	0.002	0.47	L-Sep.2020	0.7
Fresh fish and seafood ⁵	0.139	0.9	0.001	0.71	L-Sep.2020	2.1
Processed fish and seafood ⁵	0.139	0.1	0.000	0.65	S-Oct.2020	-0.1

See footnotes at end of table.

Table 6. Consumer Price Index for All Urban Consumers (CPI-U): U.S. city average, by expenditure category, December 2020, 1-month analysis table — Continued

[1982-84=100, unless otherwise noted]

Expenditure category	Relative importance Nov. 2020	One Month				
		Seasonally adjusted percent change Nov. 2020- Dec. 2020	Seasonally adjusted effect on All Items Nov. 2020- Dec. 2020 ¹	Standard error, median price change ²	Largest (L) or Smallest (S) seasonally adjusted change since: ³	
					Date	Percent change
Shelf stable fish and seafood ^{4, 6}		-0.7		0.97	S-Oct.2020	-0.9
Frozen fish and seafood ⁶		0.3 ^r		0.84	L-Oct.2020	1.0
Eggs.....	0.098	-3.5	-0.003	0.98	S-Jul.2020	-4.0
Dairy and related products.....	0.785	0.8	0.006	0.31	L-Aug.2020	1.5
Milk ⁵	0.214	1.7	0.004	0.48	L-Aug.2020	3.6
Fresh whole milk ⁶		2.3 ^r		0.70	L-Aug.2020	4.2
Fresh milk other than whole ^{5, 6}		2.0 ^r		0.52	L-Aug.2020	3.0
Cheese and related products ⁴	0.265	0.4	0.001	0.55	L-Aug.2020	2.6
Ice cream and related products.....	0.110	0.0	0.000	0.86	S-Oct.2020	-1.9
Other dairy and related products ^{4, 5}	0.196	0.5	0.001	0.56	L-May 2020	1.9
Fruits and vegetables.....	1.341	-0.2	-0.002	0.35	S-Sep.2020	-0.4
Fresh fruits and vegetables.....	1.055	-0.4	-0.004	0.41	S-Sep.2020	-0.6
Fresh fruits.....	0.543	-0.2	-0.001	0.56	S-Sep.2020	-1.3
Apples.....	0.073	1.0	0.001	1.21	L-Oct.2020	3.0
Bananas ⁴	0.075	-1.2	-0.001	0.80	S-Aug.2020	-1.6
Citrus fruits ⁵	0.144	-0.8	-0.001	0.97	S-Oct.2020	-1.6
Oranges, including tangerines ⁶		0.2 ^r		1.35	S-Oct.2020	-3.1
Other fresh fruits ⁵	0.251	-1.1	-0.003	0.97	L-Oct.2020	0.4
Fresh vegetables.....	0.512	-0.5	-0.003	0.59	L-Oct.2020	0.2
Potatoes.....	0.075	-0.4	0.000	1.57	L-Oct.2020	2.2
Lettuce ⁴	0.068	-0.4	0.000	2.16	S-Aug.2020	-1.2
Tomatoes.....	0.082	-2.6	-0.002	1.38	L-Oct.2020	1.3
Other fresh vegetables.....	0.286	0.8	0.002	0.74	L-Jul.2020	0.9
Processed fruits and vegetables ⁵	0.286	0.7	0.002	0.49	L-Apr.2020	2.7
Canned fruits and vegetables ⁵	0.149	0.4	0.001	0.69	S-Oct.2020	-0.6
Canned fruits ^{5, 6}		-0.2 ^r		0.88	S-Aug.2020	-0.9
Canned vegetables ^{5, 6}		0.3 ^r		0.98	S-Oct.2020	0.0
Frozen fruits and vegetables ⁵	0.086	0.6	0.001	0.94	L-Sep.2020	0.7
Frozen vegetables ⁶		-0.3 ^r		1.21	L-Oct.2020	0.1
Other processed fruits and vegetables including dried ⁵	0.051	1.9	0.001	0.79	L-May 2020	2.7
Dried beans, peas, and lentils ^{4, 5, 6}		2.1		1.47	L-May 2020	4.9
Nonalcoholic beverages and beverage materials.....	0.923	1.1	0.010	0.38	L-Apr.2020	2.9
Juices and nonalcoholic drinks ⁵	0.661	0.9	0.006	0.45	L-Apr.2020	3.8
Carbonated drinks.....	0.276	1.8	0.005	0.83	L-Jun.2020	2.2
Frozen noncarbonated juices and drinks ^{4, 5}	0.006	1.6	0.000	0.65	L-Apr.2020	2.9
Nonfrozen noncarbonated juices and drinks ⁵	0.380	0.5	0.002	0.54	L-Apr.2020	3.6
Beverage materials including coffee and tea ⁵	0.261	1.5	0.004	0.63	L-Feb.2017	1.5
Coffee.....	0.167	1.8	0.003	0.90	L-Jun.2020	1.8
Roasted coffee ⁶		1.2 ^r		0.99	L-Oct.2020	1.2
Instant coffee ^{4, 6}		4.2		1.15	L-Dec.2011	4.7
Other beverage materials including tea ^{4, 5}	0.094	1.0	0.001	0.74	S-Oct.2020	-1.2
Other food at home.....	1.963	0.7	0.014	0.24	L-Apr.2020	1.9
Sugar and sweets ⁴	0.269	0.5	0.001	0.64	L-Oct.2020	0.6
Sugar and sugar substitutes.....	0.038	0.2	0.000	0.84	S-Sep.2020	-0.5
Candy and chewing gum ^{4, 5}	0.179	0.8	0.001	0.90	L-Sep.2020	1.5
Other sweets ⁵	0.053	1.0	0.001	0.79	L-Oct.2020	1.8
Fats and oils.....	0.211	0.7	0.001	0.51	L-Apr.2020	1.3
Butter and margarine ⁵	0.062	2.1	0.001	0.97	L-Mar.2020	3.1
Butter ⁶		1.9 ^r		1.57	L-Mar.2020	2.6
Margarine ⁶		2.3 ^r		0.92	L-Mar.2020	2.7
Salad dressing ⁵	0.051	0.2	0.000	0.93	S-Oct.2020	-1.1
Other fats and oils including peanut butter ⁵	0.099	0.0	0.000	0.87	S-Oct.2020	-0.2

See footnotes at end of table.

Table 6. Consumer Price Index for All Urban Consumers (CPI-U): U.S. city average, by expenditure category, December 2020, 1-month analysis table — Continued

[1982-84=100, unless otherwise noted]

Expenditure category	Relative importance Nov. 2020	One Month				
		Seasonally adjusted percent change Nov. 2020-Dec. 2020	Seasonally adjusted effect on All Items Nov. 2020-Dec. 2020 ¹	Standard error, median price change ²	Largest (L) or Smallest (S) seasonally adjusted change since: ³	
					Date	Percent change
Peanut butter ^{4, 5, 6}		3.2		1.28	L-Oct.2020	3.4
Other foods.....	1.482	0.7	0.011	0.25	L-Apr.2020	2.2
Soups.....	0.088	1.7	0.002	1.06	L-Aug.2020	1.7
Frozen and freeze dried prepared foods.....	0.258	0.4	0.001	0.69	L-Aug.2020	1.2
Snacks ⁴	0.340	0.1	0.000	0.66	L-Oct.2020	0.8
Spices, seasonings, condiments, sauces.....	0.292	-0.4	-0.001	0.51	S-Sep.2020	-0.9
Salt and other seasonings and spices ^{5, 6}		2.2 ^f		1.05	L-Mar.2020	2.2
Olives, pickles, relishes ^{4, 5, 6}		-0.4		0.63	S-May 2020	-2.4
Sauces and gravies ^{5, 6}		-1.5 ^f		0.87	S-Jul.2015	-1.6
Other condiments ⁶		-0.2 ^f		1.12	L-Oct.2020	2.2
Baby food ^{4, 5}	0.043	-1.1	0.000	0.78	S-Jul.2020	-1.7
Other miscellaneous foods ⁵	0.461	1.2	0.006	0.58	L-Apr.2020	2.4
Prepared salads ^{4, 7, 6}		1.9		0.87	L-Aug.2020	2.1
Food away from home ⁴	6.330	0.4	0.024	0.05	L-Sep.2020	0.6
Full service meals and snacks ^{4, 5}	3.170	0.3	0.009	0.06	—	—
Limited service meals and snacks ^{4, 5}	2.776	0.5	0.015	0.10	L-Sep.2020	0.9
Food at employee sites and schools ⁵	0.130	-0.3	0.000	0.11	L-Oct.2020	0.1
Food at elementary and secondary schools ^{4, 8, 6}		0.1		0.06	L-Oct.2020	0.1
Food from vending machines and mobile vendors ^{4, 5}	0.080	0.1	0.000	0.25	L-Sep.2020	0.4
Other food away from home ^{4, 5}	0.174	0.1	0.000	0.09	—	—
Energy.....	6.044	4.0	0.247	0.16	L-Jun.2020	5.1
Energy commodities.....	2.919	8.2	0.243	0.20	L-Jun.2020	11.7
Fuel oil and other fuels.....	0.136	5.8	0.008	0.43	L-Jun.2020	6.6
Fuel oil.....	0.076	10.0	0.008	0.52	L-Jun.2020	10.2
Propane, kerosene, and firewood ⁹	0.060	1.2	0.001	0.60	L-Jun.2020	2.4
Motor fuel.....	2.782	8.3	0.235	0.21	L-Jun.2020	12.0
Gasoline (all types).....	2.721	8.4	0.231	0.21	L-Jun.2020	12.3
Gasoline, unleaded regular ⁶		8.8		0.68	L-Jun.2020	12.8
Gasoline, unleaded midgrade ^{10, 6}		7.2		0.73	L-Jun.2020	10.3
Gasoline, unleaded premium ⁶		6.1		0.76	L-Jun.2020	9.3
Other motor fuels ⁵	0.061	6.2	0.004	0.24	L-Sep.2017	6.9
Energy services.....	3.125	0.1	0.005	0.19	S-Aug.2020	-0.2
Electricity.....	2.420	0.4	0.010	0.20	S-Aug.2020	-0.2
Utility (piped) gas service.....	0.705	-0.8	-0.006	0.31	S-Jul.2020	-1.0
All items less food and energy.....	79.874	0.1	0.068	0.04	S-Oct.2020	0.0
Commodities less food and energy commodities.....	20.279	0.2	0.031	0.11	L-Sep.2020	0.8
Household furnishings and supplies ¹¹	3.795	-0.1	-0.005	0.22	S-Oct.2020	-0.5
Window and floor coverings and other linens ^{4, 5}	0.277	-2.3	-0.006	1.10	L-Oct.2020	-1.5
Floor coverings ^{4, 5}	0.063	-1.3	-0.001	0.91	S-Oct.2019	-1.5
Window coverings ^{4, 5}	0.059	-1.2	-0.001	1.47	L-Oct.2020	0.4
Other linens ^{4, 5}	0.156	-3.0	-0.005	1.72	L-Oct.2020	-2.8
Furniture and bedding ⁴	0.943	0.2	0.002	0.49	S-Oct.2020	-0.4
Bedroom furniture ⁴	0.329	0.2	0.001	0.62	S-Oct.2020	-0.4
Living room, kitchen, and dining room furniture ^{4, 5}	0.453	0.2	0.001	0.86	L-Sep.2020	1.9
Other furniture ^{4, 5}	0.151	0.5	0.001	0.99	S-Oct.2020	-0.3
Infants' furniture ^{4, 8, 6}						
Appliances ⁵	0.221	-0.2	-0.001	0.58	S-Sep.2020	-1.8
Major appliances ⁵	0.079	-3.0	-0.002	0.98	S-EVER	—
Laundry equipment ⁶		0.6 ^f		1.42	S-Oct.2020	0.5
Other appliances ⁵	0.139	1.2	0.002	0.70	S-Oct.2020	-0.5
Other household equipment and furnishings ⁵	0.537	1.1	0.006	0.59	L-Aug.2020	1.5
Clocks, lamps, and decorator items ⁴	0.316	-0.6	-0.002	0.93	S-Oct.2020	-1.4

See footnotes at end of table.

Table 6. Consumer Price Index for All Urban Consumers (CPI-U): U.S. city average, by expenditure category, December 2020, 1-month analysis table — Continued
 [1982-84=100, unless otherwise noted]

Expenditure category	Relative importance Nov. 2020	One Month				
		Seasonally adjusted percent change Nov. 2020-Dec. 2020	Seasonally adjusted effect on All Items Nov. 2020-Dec. 2020 ¹	Standard error, median price change ²	Largest (L) or Smallest (S) seasonally adjusted change since: ³	
					Date	Percent change
Indoor plants and flowers ¹²	0.091	1.5	0.001	0.64	L-Jul.2020	1.8
Dishes and flatware ^{4, 5}	0.053	-2.9	-0.002	1.39	S-Oct.2020	-4.1
Nonelectric cookware and tableware ⁵	0.077	0.6	0.000	0.96	L-Sep.2020	1.9
Tools, hardware, outdoor equipment and supplies ⁵	0.891	0.5	0.004	0.43	L-Jun.2020	0.9
Tools, hardware and supplies ^{4, 5}	0.243	0.1	0.000	0.60	L-Oct.2020	0.1
Outdoor equipment and supplies ⁵	0.458	0.4	0.002	0.52	S-Oct.2020	-0.2
Housekeeping supplies ⁴	0.927	-0.4	-0.004	0.31	S-Sep.2020	-1.2
Household cleaning products ^{4, 5}	0.364	0.9	0.003	0.34	L-Jul.2020	1.8
Household paper products ^{4, 5}	0.234	0.1	0.000	0.59	S-Oct.2020	-0.1
Miscellaneous household products ^{4, 5}	0.328	-2.4	-0.008	0.66	S-Nov.2017	-2.5
Apparel.....	2.716	1.4	0.037	0.52	L-Jun.2020	1.7
Men's and boys' apparel.....	0.678	2.3	0.016	0.66	L-Jun.2020	2.4
Men's apparel.....	0.543	2.4	0.013	0.74	L-Feb.2009	3.1
Men's suits, sport coats, and outerwear.....	0.089	4.6	0.004	2.12	L-Jun.2020	4.7
Men's underwear, nightwear, swimwear, and accessories ⁴	0.163	-2.6	-0.004	1.11	S-Dec.2019	-2.6
Men's shirts and sweaters ⁵	0.153	4.8	0.007	1.15	L-Sep.2015	8.3
Men's pants and shorts.....	0.132	0.7	0.001	1.22	S-Oct.2020	-1.3
Boys' apparel.....	0.135	2.3	0.003	1.46	L-Jul.2020	5.8
Women's and girls' apparel.....	1.103	1.4	0.015	0.93	L-Feb.2020	1.4
Women's apparel.....	0.905	1.2	0.011	1.09	L-Jul.2020	1.7
Women's outerwear.....	0.064	3.0	0.002	1.87	L-Jul.2020	4.6
Women's dresses.....	0.095	3.2	0.003	1.58	L-Aug.2020	4.9
Women's suits and separates ⁵	0.460	2.1	0.010	1.54	L-Nov.2019	2.8
Women's underwear, nightwear, swimwear, and accessories ⁵	0.276	-1.2	-0.003	1.38	S-May 2020	-5.3
Girls' apparel.....	0.198	2.3	0.005	1.95	S-Oct.2020	-3.6
Footwear.....	0.655	0.3	0.002	0.71	S-Sep.2020	-0.9
Men's footwear ⁴	0.228	-1.6	-0.004	0.99	S-May 2020	-2.0
Boys' and girls' footwear.....	0.139	-1.2	-0.002	1.31	S-Sep.2020	-2.1
Women's footwear.....	0.287	1.1	0.003	0.91	L-Aug.2020	2.0
Infants' and toddlers' apparel.....	0.127	-0.8	-0.001	1.21	S-Oct.2020	-3.4
Jewelry and watches ⁹	0.154	2.8	0.004	2.07	L-Jun.2019	3.9
Watches ^{4, 9}	0.039	1.7	0.001	1.91	L-Aug.2020	2.7
Jewelry ⁹	0.115	2.1	0.002	2.46	L-Sep.2020	3.5
Transportation commodities less motor fuel ¹¹	7.148	-0.2	-0.013	0.11	L-Oct.2020	0.2
New vehicles.....	3.734	0.4	0.017	0.19	L-Oct.2020	0.4
New cars and trucks ^{5, 6}		0.4 ^r		0.17	L-Oct.2020	0.4
New cars ⁶		0.5 ^r		0.17	L-Jul.2020	0.7
New trucks ^{13, 6}		0.4 ^r		0.20	L-Oct.2020	0.7
Used cars and trucks.....	2.778	-1.2	-0.032	0.02	L-Oct.2020	-0.1
Motor vehicle parts and equipment ⁴	0.391	0.6	0.002	0.36	L-May 2020	0.8
Tires ⁴	0.248	0.7	0.002	0.35	L-Jul.2020	0.7
Vehicle accessories other than tires ^{4, 5}	0.144	0.4	0.001	0.62	L-Sep.2020	1.0
Vehicle parts and equipment other than tires ^{4, 6}		-0.1		0.47	S-Oct.2020	-2.0
Motor oil, coolant, and fluids ^{4, 6}		1.2		1.56	L-Jul.2020	1.2
Medical care commodities.....	1.586	-0.4	-0.006	0.30	S-Oct.2020	-0.8
Medicinal drugs ¹¹	1.520	-0.2	-0.003	0.31	S-Oct.2020	-0.8
Prescription drugs.....	1.144	-0.4	-0.005	0.32	S-Oct.2020	-0.4
Nonprescription drugs ^{4, 11}	0.376	-0.4	-0.002	0.53	S-Oct.2020	-1.3
Medical equipment and supplies ^{4, 11}	0.066	-0.2	0.000	0.59	L-Jul.2020	0.3
Recreation commodities ¹¹	2.007	0.2	0.004	0.22	S-Oct.2020	-0.1
Video and audio products ¹¹	0.270	0.3	0.001	0.38	L-Sep.2020	0.6

See footnotes at end of table.

Table 6. Consumer Price Index for All Urban Consumers (CPI-U): U.S. city average, by expenditure category, December 2020, 1-month analysis table — Continued

[1982-84=100, unless otherwise noted]

Expenditure category	Relative importance Nov. 2020	One Month				
		Seasonally adjusted percent change Nov. 2020-Dec. 2020	Seasonally adjusted effect on All Items Nov. 2020-Dec. 2020 ¹	Standard error, median price change ²	Largest (L) or Smallest (S) seasonally adjusted change since: ³	
					Date	Percent change
Televisions.....	0.092	0.7	0.001	0.68	S-Oct.2020	-0.4
Other video equipment ⁵	0.042	2.5	0.001	0.88	L-Aug.2020	4.2
Audio equipment ⁴	0.079	-0.3	0.000	0.84	L-Oct.2020	1.0
Recorded music and music subscriptions ^{4, 5}	0.046	-1.2	-0.001	0.67	S-May 2020	-1.2
Pets and pet products ⁴	0.629	0.5	0.003	0.24	S-Oct.2020	-0.8
Pet food ^{4, 5, 6}		0.0		0.26	S-Oct.2020	-0.4
Purchase of pets, pet supplies, accessories ^{4, 5, 6}		1.1		0.45	—	—
Sporting goods.....	0.600	0.5	0.003	0.56	S-Oct.2020	0.3
Sports vehicles including bicycles ⁴	0.365	-0.8	-0.003	0.79	S-Sep.2020	-1.3
Sports equipment.....	0.225	3.6	0.008	0.53	L-EVER	—
Photographic equipment and supplies.....	0.027	2.2	0.001	0.88	L-Feb.2020	4.9
Film and photographic supplies ^{4, 5, 6}						
Photographic equipment ^{5, 6}		3.7 ^r		1.01	L-Feb.2020	5.2
Recreational reading materials ⁴	0.120	0.7	0.001	1.00	L-Oct.2020	1.1
Newspapers and magazines ^{4, 5}	0.068	0.2	0.000	1.26	S-Sep.2020	-1.5
Recreational books ^{4, 5}	0.050	1.2	0.001	1.25	L-Oct.2020	2.2
Other recreational goods ⁵	0.361	-1.2	-0.004	0.48	S-Apr.2019	-1.3
Toys.....	0.276	-0.3	-0.001	0.50	L-Oct.2020	0.3
Toys, games, hobbies and playground equipment ^{7, 6}		0.0 ^r		0.68	L-Oct.2020	1.5
Sewing machines, fabric and supplies ^{4, 5}	0.022	-10.4	-0.002	1.24	S-EVER	—
Music instruments and accessories ^{4, 5}	0.047	-2.4	-0.001	0.64	S-Dec.2019	-2.6
Education and communication commodities ¹¹	0.500	0.8	0.004	0.46	L-Aug.2019	1.0
Educational books and supplies.....	0.109	0.5	0.001	0.76	L-Aug.2020	0.8
College textbooks ^{4, 14, 6}		0.8		0.84	L-Aug.2020	0.8
Information technology commodities ¹¹	0.392	0.8	0.003	0.53	L-Aug.2019	0.8
Computers, peripherals, and smart home assistants ⁷	0.294	1.8	0.005	0.68	S-Oct.2020	-0.5
Computer software and accessories ^{4, 5}	0.018	1.7	0.000	1.50	S-Oct.2020	0.7
Telephone hardware, calculators, and other consumer information items ⁵	0.080	-3.0	-0.002	0.81	L-Oct.2020	-0.1
Alcoholic beverages.....	1.041	0.0	-0.001	0.18	S-Sep.2020	-0.2
Alcoholic beverages at home.....	0.583	-0.2	-0.001	0.27	S-Sep.2020	-0.3
Beer, ale, and other malt beverages at home.....	0.225	-0.6	-0.001	0.34	S-Jun.2020	-0.6
Distilled spirits at home.....	0.094	0.5	0.000	0.44	L-Sep.2020	1.0
Whiskey at home ^{4, 6}		-0.3		0.90	S-May 2020	-0.8
Distilled spirits, excluding whiskey, at home ^{4, 6}		0.2		0.62	L-Sep.2020	0.5
Wine at home.....	0.264	0.0	0.000	0.47	S-Sep.2020	-0.5
Alcoholic beverages away from home ⁴	0.458	0.0	0.000	0.22	S-Jul.2020	-0.9
Beer, ale, and other malt beverages away from home ^{7, 5, 6}		0.5		0.25	S-Oct.2020	-0.6
Wine away from home ^{4, 5, 6}		0.1		0.17	S-Sep.2020	0.0
Distilled spirits away from home ^{4, 5, 6}		-0.3		0.25	S-Jul.2020	-0.4
Other goods ¹¹	1.485	0.3	0.005	0.21	S-Oct.2020	-0.1
Tobacco and smoking products.....	0.605	1.0	0.006	0.13	L-Jun.2020	1.1
Cigarettes ⁵	0.526	1.1	0.006	0.13	L-Jun.2020	1.2
Tobacco products other than cigarettes ^{4, 5}	0.060	-0.1	0.000	0.39	S-Sep.2020	-0.4
Personal care products ⁴	0.683	-0.6	-0.004	0.28	S-Dec.2019	-1.1
Hair, dental, shaving, and miscellaneous personal care products ^{4, 5}	0.367	-0.8	-0.003	0.37	S-Aug.2017	-1.1
Cosmetics, perfume, bath, nail preparations and implements ⁴	0.307	-0.3	-0.001	0.44	S-Sep.2020	-0.9
Miscellaneous personal goods ⁵	0.197	1.2	0.002	1.05	S-Oct.2020	0.2
Stationery, stationery supplies, gift wrap ⁶		-0.5 ^r		1.05	S-Aug.2020	-3.9

See footnotes at end of table.

Table 6. Consumer Price Index for All Urban Consumers (CPI-U): U.S. city average, by expenditure category, December 2020, 1-month analysis table — Continued
 [1982-84=100, unless otherwise noted]

Expenditure category	Relative importance Nov. 2020	One Month				
		Seasonally adjusted percent change Nov. 2020- Dec. 2020	Seasonally adjusted effect on All Items Nov. 2020- Dec. 2020 ¹	Standard error, median price change ²	Largest (L) or Smallest (S) seasonally adjusted change since: ³	
					Date	Percent change
Infants' equipment ^{4, 8, 6}		3.2		1.19	L-Jun.2020	3.6
Services less energy services.....	59.595	0.1	0.050	0.04	S-Oct.2020	0.1
Shelter.....	33.320	0.1	0.042	0.05	—	—
Rent of shelter ¹⁵	32.954	0.1	0.040	0.06	S-Oct.2020	0.0
Rent of primary residence.....	7.860	0.1	0.008	0.04	L-Oct.2020	0.2
Lodging away from home ⁵	0.841	0.0	0.000	1.55	S-Oct.2020	-3.2
Housing at school, excluding board ¹⁵	0.118	0.1	0.000	0.04	—	—
Other lodging away from home including hotels and motels.....	0.722	0.0	0.000	1.76	S-Oct.2020	-3.7
Owners' equivalent rent of residences ¹⁵	24.253	0.1	0.033	0.04	L-Oct.2020	0.2
Owners' equivalent rent of primary residence ¹⁵ ...	23.035	0.1	0.032	0.04	L-Oct.2020	0.2
Tenants' and household insurance ^{4, 5}	0.366	0.1	0.000	0.07	S-Sep.2020	0.0
Water and sewer and trash collection services ⁵	1.105	0.4	0.005	0.08	L-Aug.2020	0.6
Water and sewerage maintenance.....	0.810	0.4	0.003	0.09	L-Aug.2020	0.6
Garbage and trash collection ^{4, 13}	0.295	0.6	0.002	0.15	L-Feb.2020	0.7
Household operations ^{4, 5}	0.883	2.0	0.017	0.21	L-Jun.2019	2.8
Domestic services ^{4, 5}	0.293	3.2	0.009	0.29	L-EVER	—
Gardening and lawncare services ^{4, 5}						
Moving, storage, freight expense ^{4, 5}	0.092	-0.5	0.000	0.60	S-Oct.2020	-0.9
Repair of household items ^{4, 5}						
Medical care services.....	7.311	-0.1	-0.009	0.17	—	—
Professional services.....	3.667	0.0	0.000	0.13	—	—
Physicians' services.....	1.821	0.0	0.000	0.17	S-Oct.2020	0.0
Dental services.....	1.005	0.2	0.002	0.10	L-Oct.2020	0.3
Eyeglasses and eye care ^{4, 9}	0.366	-0.1	0.000	0.24	L-Oct.2020	-0.1
Services by other medical professionals ^{4, 9}	0.474	0.0	0.000	0.14	L-Oct.2020	0.0
Hospital and related services.....	2.420	0.3	0.007	0.21	S-Oct.2020	-0.5
Hospital services ¹⁶	2.223	0.3	0.007	0.24	—	—
Inpatient hospital services ^{16, 6}		0.2		0.32	S-Oct.2020	-0.5
Outpatient hospital services ^{9, 6}		0.2		0.25	S-Oct.2020	-0.6
Nursing homes and adult day services ¹⁶	0.125	0.1	0.000	0.13	S-May 2020	0.0
Care of invalids and elderly at home ^{4, 8}	0.073	0.2	0.000	0.11	—	—
Health insurance ^{4, 8}	1.224	-1.1	-0.014	0.20	S-Oct.2020	-1.2
Transportation services.....	5.189	-0.1	-0.005	0.11	S-Sep.2020	-0.9
Leased cars and trucks ^{4, 14}						
Car and truck rental ⁵	0.139	-5.6	-0.008	1.64	S-Apr.2020	-16.6
Motor vehicle maintenance and repair ⁴	1.100	0.0	0.000	0.19	S-Jul.2020	-0.1
Motor vehicle body work ⁴	0.059	-0.1	0.000	0.25	—	—
Motor vehicle maintenance and servicing ⁴	0.635	0.1	0.000	0.23	S-Sep.2020	-0.1
Motor vehicle repair ^{4, 5}	0.346	-0.1	0.000	0.26	S-Jul.2020	-0.3
Motor vehicle insurance.....	1.577	1.4	0.022	0.11	L-Jul.2020	9.3
Motor vehicle fees ^{4, 5}	0.567	-0.3	-0.002	0.13	—	—
State motor vehicle registration and license fees ^{4, 5}	0.297	0.0	0.000	0.11	S-Oct.2020	0.0
Parking and other fees ^{4, 5}	0.256	-0.6	-0.001	0.25	L-Oct.2020	-0.5
Parking fees and tolls ^{5, 6}		-0.3 ^r		0.26	S-Oct.2020	-0.3
Automobile service clubs ^{4, 5, 6}		-1.1		0.31	S-Apr.2020	-4.3
Public transportation.....	1.155	-0.7	-0.008	0.37	S-Aug.2020	-1.2
Airline fares.....	0.687	-2.3	-0.016	0.57	S-May 2020	-4.9
Other intercity transportation.....	0.178	1.7	0.003	0.70	S-Oct.2020	1.4
Intercity bus fare ^{4, 7, 6}		0.0		1.47	S-Oct.2020	-1.8
Intercity train fare ^{4, 7, 6}						
Ship fare ^{4, 5, 6}		3.8		0.75	L-Jul.2015	3.8

See footnotes at end of table.

Table 6. Consumer Price Index for All Urban Consumers (CPI-U): U.S. city average, by expenditure category, December 2020, 1-month analysis table — Continued

[1982-84=100, unless otherwise noted]

Expenditure category	Relative importance Nov. 2020	One Month				
		Seasonally adjusted percent change Nov. 2020-Dec. 2020	Seasonally adjusted effect on All Items Nov. 2020-Dec. 2020 ¹	Standard error, median price change ²	Largest (L) or Smallest (S) seasonally adjusted change since: ³	
					Date	Percent change
Intracity transportation ⁴	0.288	-0.1	0.000	0.35	L-Sep.2020	8.8
Intracity mass transit ^{4, 11, 6}		0.0		0.13	L-Sep.2020	13.3
Recreation services ¹¹	3.811	-0.5	-0.021	0.17	S-Jul.2020	-1.2
Video and audio services ¹¹	1.264	0.4	0.005	0.17	L-Aug.2020	0.5
Cable and satellite television service ¹³	1.187	0.4	0.005	0.19	L-Oct.2020	0.5
Video discs and other media, including rental of video ^{4, 5}	0.077	-0.2	0.000	0.95	L-Sep.2020	0.9
Video discs and other media ^{4, 5, 6}		-0.7		1.68	L-Sep.2020	1.7
Rental of video discs and other media ^{4, 5, 6}		1.0		0.76	L-Jun.2019	2.2
Pet services including veterinary ⁵	0.560	0.1	0.001	0.16	S-Feb.2020	-0.4
Pet services ^{4, 5, 6}		0.1		0.24	L-Oct.2020	0.8
Veterinarian services ^{5, 6}		0.1 ^r		0.25	S-Feb.2020	-0.7
Photographers and photo processing ^{4, 5}	0.045	-1.9	-0.001	0.46	S-Apr.2020	-1.9
Photographer fees ^{4, 5, 6}						
Photo processing ^{4, 5, 6}		-5.6		0.62	S-EVER	-
Other recreation services ⁵	1.942	-1.3	-0.025	0.31	S-Jul.2020	-3.2
Club membership for shopping clubs, fraternal, or other organizations, or participant sports fees ^{4, 5}	0.688	0.3	0.002	0.35	-	-
Admissions.....	0.712	-3.5	-0.025	0.69	S-EVER	-
Admission to movies, theaters, and concerts ^{4, 5, 6}		0.2		0.54	S-Oct.2020	0.1
Admission to sporting events ^{4, 5, 6}						
Fees for lessons or instructions ^{4, 9}	0.218	-0.1	0.000	0.43	S-Oct.2019	-0.1
Education and communication services ¹¹	6.315	0.1	0.005	0.07	L-Oct.2020	0.1
Tuition, other school fees, and childcare.....	2.926	0.2	0.007	0.10	-	-
College tuition and fees.....	1.571	0.2	0.004	0.16	L-Jul.2020	0.3
Elementary and high school tuition and fees.....	0.431	0.3	0.001	0.06	L-May 2020	0.5
Day care and preschool ¹²	0.768	0.3	0.002	0.13	L-Jul.2020	0.4
Technical and business school tuition and fees ⁵	0.037	0.1	0.000	0.12	S-Sep.2020	-0.3
Postage and delivery services ⁵	0.111	0.2	0.000	0.03	S-Oct.2020	0.2
Postage.....	0.101	0.1	0.000	0.00	S-Dec.2019	0.1
Delivery services ⁵	0.010	1.5	0.000	0.27	L-Apr.2013	1.8
Telephone services ^{4, 5}	2.373	-0.1	-0.002	0.10	-	-
Wireless telephone services ^{4, 5}	1.963	-0.1	-0.002	0.05	L-Oct.2020	0.0
Land-line telephone services ^{4, 11}	0.410	0.1	0.000	0.36	S-Aug.2020	-0.1
Internet services and electronic information providers ⁵	0.893	-0.1	0.000	0.22	-	-
Other personal services ^{4, 11}	1.662	0.9	0.015	0.13	L-Apr.2018	1.0
Personal care services ⁴	0.688	1.0	0.007	0.14	L-Jul.2020	1.5
Haircuts and other personal care services ^{4, 5}	0.688	1.0	0.007	0.14	L-Jul.2020	1.5
Miscellaneous personal services.....	0.974	0.9	0.008	0.15	L-Apr.2018	1.3
Legal services ^{4, 9}	0.250	0.0	0.000	0.12	-	-
Funeral expenses ^{4, 9}	0.140	0.1	0.000	0.19	-	-
Laundry and dry cleaning services ^{4, 5}	0.220	0.4	0.001	0.22	L-Sep.2020	0.5
Apparel services other than laundry and dry cleaning ^{4, 5}	0.030	0.4	0.000	0.36	L-Sep.2020	1.0
Financial services ⁹	0.223	2.8	0.006	0.20	L-Apr.2018	4.6
Checking account and other bank services ^{4, 5, 6}		8.5		0.00	L-EVER	-
Tax return preparation and other accounting fees ^{4, 5, 6}		-0.6		0.31	S-Apr.2020	-1.0
Special aggregate indexes						
All items less food.....	85.918	0.4	0.315	0.04	L-Aug.2020	0.4

See footnotes at end of table.

Table 6. Consumer Price Index for All Urban Consumers (CPI-U): U.S. city average, by expenditure category, December 2020, 1-month analysis table — Continued

[1982-84=100, unless otherwise noted]

Expenditure category	Relative importance Nov. 2020	One Month				
		Seasonally adjusted percent change Nov. 2020-Dec. 2020	Seasonally adjusted effect on All Items Nov. 2020-Dec. 2020 ¹	Standard error, median price change ²	Largest (L) or Smallest (S) seasonally adjusted change since: ³	
					Date	Percent change
All items less shelter.....	66.680	0.5	0.325	0.05	L-Aug.2020	0.5
All items less food and shelter.....	52.598	0.5	0.273	0.06	L-Aug.2020	0.6
All items less food, shelter, and energy.....	46.554	0.1	0.026	0.06	S-Oct.2020	-0.1
All items less food, shelter, energy, and used cars and trucks.....	43.776	0.1	0.058	0.07	S-Oct.2020	-0.1
All items less medical care.....	91.104	0.4	0.383	0.04	L-Aug.2020	0.4
All items less energy.....	93.956	0.1	0.120	0.04	S-Oct.2020	0.0
Commodities.....	37.280	0.9	0.326	0.07	L-Jun.2020	1.2
Commodities less food, energy, and used cars and trucks.....	17.501	0.4	0.063	0.12	L-Aug.2020	0.4
Commodities less food.....	23.198	1.2	0.274	0.09	L-Aug.2020	1.2
Commodities less food and beverages.....	22.157	1.2	0.274	0.10	L-Aug.2020	1.2
Services.....	62.720	0.1	0.055	0.04	S-Oct.2020	0.1
Services less rent of shelter ¹⁵	29.766	0.0	-0.006	0.06	S-May 2020	-0.3
Services less medical care services.....	55.409	0.1	0.052	0.04	S-Sep.2020	0.1
Durables.....	10.944	0.0	0.003	0.12	L-Oct.2020	0.4
Nondurables.....	26.336	1.4	0.372	0.08	L-Jun.2020	1.8
Nondurables less food.....	12.254	2.5	0.305	0.15	L-Jun.2020	3.0
Nondurables less food and beverages.....	11.213	2.7	0.303	0.16	L-Jun.2020	3.3
Nondurables less food, beverages, and apparel.....	8.496	3.0	0.259	0.13	L-Jun.2020	3.8
Nondurables less food and apparel.....	9.537	2.7	0.260	0.12	L-Jun.2020	3.4
Housing.....	42.364	0.2	0.068	0.05	S-Oct.2020	0.1
Education and communication ⁵	6.815	0.1	0.009	0.07	L-Oct.2020	0.1
Education ⁵	3.035	0.2	0.007	0.10	L-Jul.2020	0.2
Communication ⁵	3.781	0.0	0.002	0.10	—	—
Information and information processing ⁵	3.669	0.0	0.001	0.11	—	—
Information technology, hardware and services ¹⁷	1.296	0.2	0.003	0.24	L-Aug.2020	0.2
Recreation ⁵	5.818	-0.3	-0.016	0.15	S-Jul.2020	-0.6
Video and audio ⁵	1.534	0.4	0.006	0.17	L-Aug.2020	0.6
Pets, pet products and services ⁵	1.189	0.3	0.004	0.16	S-Oct.2020	-0.2
Photography ⁵	0.073	-0.4	0.000	0.53	S-Aug.2020	-0.9
Food and beverages.....	15.123	0.3	0.052	0.07	L-Jun.2020	0.6
Domestically produced farm food.....	6.477	0.2	0.014	0.13	L-Jun.2020	0.7
Other services.....	11.788	0.0	0.000	0.07	S-Jun.2020	-0.3
Apparel less footwear.....	2.062	1.7	0.035	0.64	L-Jun.2020	1.7
Fuels and utilities.....	4.366	0.4	0.017	0.14	S-Aug.2020	0.1
Household energy.....	3.261	0.4	0.012	0.18	S-Aug.2020	-0.1
Medical care.....	8.896	-0.2	-0.015	0.18	S-Oct.2020	-0.4
Transportation.....	15.120	1.4	0.216	0.08	L-Jul.2020	2.9
Private transportation.....	13.965	1.6	0.224	0.09	L-Jul.2020	2.9
New and used motor vehicles ⁵	7.547	-0.4	-0.033	0.11	S-Jan.2020	-0.4
Utilities and public transportation.....	8.945	-0.2	-0.014	0.10	S-May 2020	-0.7
Household furnishings and operations.....	4.678	0.2	0.009	0.18	S-Oct.2020	-0.3
Other goods and services.....	3.147	0.5	0.017	0.12	L-Jan.2020	0.6
Personal care ⁴	2.542	0.4	0.011	0.15	L-Feb.2020	0.4

¹ The 'effect' of an item category is a measure of that item's contribution to the All items price change. For example, if the Food index had an effect of 0.40, and the All items index rose 1.2 percent, then the increase in food prices contributed 0.40 / 1.2, or 33.3 percent, to that All items increase. Said another way, had food prices been unchanged for that month the change in the All items index would have been 1.2 percent minus 0.40, or 0.8 percent. Effects can be negative as well. For example, if the effect of food was a negative 0.1, and the All items index rose 0.5 percent, the All items index actually would have been 0.1 percent higher (or 0.6 percent) had food prices been unchanged. Since food prices fell while prices overall were rising, the contribution of food to the All items price change was negative (in this case, -0.1 / 0.5, or minus 20 percent).

² A statistic's margin of error is often expressed as its point estimate plus or minus two standard errors. For example, if a CPI category rose 0.6 percent, and its standard error was 0.15 percent, the margin of error on this item's 1-month percent change would be 0.6 percent, plus or minus 0.3 percent.

³ If the current seasonally adjusted 1-month percent change is greater than the previous published 1-month percent change, then this column

identifies the closest prior month with a 1-month percent change as (L)arger as or (L)arger than the current 1-month change. If the current 1-month percent change is smaller than the previous published 1-month percent change, the most recent month with a change as (S)mall or (S)maller than the current month change is identified. If the current and previous published 1-month percent changes are equal, a dash will appear. Standard numerical comparisons are used. For example, 0.8% is greater than 0.6%, -0.4% is less than -0.2%, and -0.2% is less than 0.0%. Note that a (L)arger change can be a smaller decline, for example, a -0.2% change is larger than a -0.4% change, but still represents a decline in the price index. Likewise, (S)maller changes can be increases, for example, a 0.6% change is smaller than 0.8%, but still represents an increase in the price index. In this context, a -0.2% change is considered to be smaller than a 0.0% change.

⁴ Not seasonally adjusted.

⁵ Indexes on a December 1997=100 base.

⁶ Special indexes based on a substantially smaller sample. These series do not contribute to the all items index aggregation and therefore do not have a relative importance or effect.

⁷ Indexes on a December 2007=100 base.

⁸ Indexes on a December 2005=100 base.

⁹ Indexes on a December 1986=100 base.

¹⁰ Indexes on a December 1993=100 base.

¹¹ Indexes on a December 2009=100 base.

¹² Indexes on a December 1990=100 base.

¹³ Indexes on a December 1983=100 base.

¹⁴ Indexes on a December 2001=100 base.

¹⁵ Indexes on a December 1982=100 base.

¹⁶ Indexes on a December 1996=100 base.

¹⁷ Indexes on a December 1988=100 base.

r Revised

Table 7. Consumer Price Index for All Urban Consumers (CPI-U): U.S. city average, by expenditure category, December 2020, 12-month analysis table
 [1982-84=100, unless otherwise noted]

Expenditure category	Relative importance Nov. 2020	Twelve Month				
		Unadjusted percent change Dec. 2019- Dec. 2020	Unadjusted effect on All Items Dec. 2019- Dec. 2020 ¹	Standard error, median price change ²	Largest (L) or Smallest (S) unadjusted change since: ³	
					Date	Percent change
All items.....	100.000	1.4		0.08	L-Sep.2020	1.4
Food.....	14.082	3.9	0.541	0.15	L-Oct.2020	3.9
Food at home.....	7.753	3.9	0.298	0.19	L-Oct.2020	4.0
Cereals and bakery products.....	0.999	3.2	0.031	0.44	L-Jun.2020	3.3
Cereals and cereal products.....	0.306	3.5	0.011	0.80	L-May 2012	4.0
Flour and prepared flour mixes.....	0.041	3.2	0.001	1.08	S-Oct.2020	2.3
Breakfast cereal.....	0.141	2.8	0.004	1.01	S-Aug.2020	0.5
Rice, pasta, cornmeal.....	0.124	4.4	0.005	1.35	L-May 2020	5.0
Rice ^{4, 5}		5.9		1.84	L-Nov.2011	8.1
Bakery products.....	0.693	3.0	0.021	0.55	L-Oct.2020	3.1
Bread ⁴	0.200	3.5	0.007	0.98	L-Oct.2020	4.6
White bread ⁵		3.3		1.32	L-Oct.2020	5.0
Bread other than white ⁵		4.2		1.32	L-Oct.2020	4.6
Fresh biscuits, rolls, muffins ⁴	0.101	3.0	0.003	1.35	L-Oct.2020	3.2
Cakes, cupcakes, and cookies.....	0.178	3.0	0.005	1.01	L-Aug.2019	3.2
Cookies ⁵		4.3		1.31	L-Apr.2020	6.3
Fresh cakes and cupcakes ⁵		-0.8		1.09	L-Oct.2020	-0.2
Other bakery products.....	0.215	2.5	0.005	0.89	S-Oct.2020	2.1
Fresh sweetrolls, coffeecakes, doughnuts ⁵		4.4		1.97	S-Oct.2020	3.9
Crackers, bread, and cracker products ⁵		1.2		1.60	S-Oct.2020	1.1
Frozen and refrigerated bakery products, pies, tarts, turnovers ⁵		3.0		0.81	L-Nov.2012	3.9
Meats, poultry, fish, and eggs.....	1.743	4.6	0.077	0.33	S-Mar.2020	2.3
Meats, poultry, and fish.....	1.645	5.0	0.079	0.35	S-Mar.2020	2.5
Meats.....	1.031	5.2	0.051	0.44	S-Mar.2020	3.3
Beef and veal.....	0.474	5.3	0.024	0.59	S-Mar.2020	3.8
Uncooked ground beef.....	0.175	5.3	0.009	0.86	S-Feb.2020	3.8
Uncooked beef roasts ⁴	0.074	6.9	0.005	1.62	S-Mar.2020	3.6
Uncooked beef steaks ⁴	0.181	3.8	0.007	0.93	S-Mar.2020	2.1
Uncooked other beef and veal ⁴	0.044	9.3	0.004	1.19	L-Aug.2020	10.0
Pork.....	0.325	5.2	0.016	0.91	L-Oct.2020	6.2
Bacon, breakfast sausage, and related products ⁴	0.133	5.7	0.007	1.14	L-Dec.2017	5.9
Bacon and related products ⁵		6.2		1.48	L-Jun.2019	7.0
Breakfast sausage and related products ^{4, 5}		4.9		1.62	L-Oct.2020	6.1
Ham.....	0.064	1.4	0.001	3.14	L-Oct.2020	1.5
Ham, excluding canned ⁵		1.7		3.40	L-Sep.2020	3.2
Pork chops.....	0.052	8.6	0.004	2.19	S-Apr.2020	7.9
Other pork including roasts, steaks, and ribs ⁴	0.076	5.5	0.004	2.01	S-Mar.2020	2.3
Other meats.....	0.233	4.9	0.011	0.72	L-Oct.2020	4.9
Frankfurters ⁵		9.1		1.91	L-Oct.2020	10.4
Lunchmeats ^{4, 5}		4.6		0.88	S-Jul.2020	4.1
Lamb and organ meats ⁵						
Lamb and mutton ^{4, 5}						
Poultry.....	0.336	4.3	0.014	0.77	S-Mar.2020	2.2
Chicken ⁴	0.275	4.0	0.011	0.91	S-Mar.2020	1.2
Fresh whole chicken ⁵		1.9		1.77	S-Mar.2020	1.5
Fresh and frozen chicken parts ⁵		4.9		1.08	S-Mar.2020	1.1
Other uncooked poultry including turkey ⁴	0.061	5.5	0.003	2.42	S-Feb.2020	3.3
Fish and seafood.....	0.278	5.0	0.013	0.76	L-Sep.2014	6.1
Fresh fish and seafood ⁴	0.139	5.1	0.007	1.11	L-Sep.2020	5.4
Processed fish and seafood ⁴	0.139	4.8	0.006	1.15	L-Feb.2019	5.2
Shelf stable fish and seafood ⁵		5.5		1.59	S-Oct.2020	3.3

See footnotes at end of table.

Table 7. Consumer Price Index for All Urban Consumers (CPI-U): U.S. city average, by expenditure category, December 2020, 12-month analysis table — Continued
 [1982-84=100, unless otherwise noted]

Expenditure category	Relative importance Nov. 2020	Twelve Month				
		Unadjusted percent change Dec. 2019-Dec. 2020	Unadjusted effect on All Items Dec. 2019-Dec. 2020 ¹	Standard error, median price change ²	Largest (L) or Smallest (S) unadjusted change since: ³	
					Date	Percent change
Frozen fish and seafood ⁵		4.5		1.70	L-Oct.2020	4.6
Eggs.....	0.098	-1.5	-0.002	1.58	S-Mar.2020	-1.6
Dairy and related products.....	0.785	4.4	0.034	0.43	L-Sep.2020	5.0
Milk ⁴	0.214	6.0	0.013	0.78	L-Sep.2020	7.2
Fresh whole milk ⁵		7.7		1.41	L-Sep.2020	9.2
Fresh milk other than whole ^{4, 5}		5.4		1.25	L-Sep.2020	6.4
Cheese and related products.....	0.265	3.8	0.010	0.71	L-Oct.2020	4.6
Ice cream and related products.....	0.110	4.0	0.004	1.16	L-Sep.2020	4.5
Other dairy and related products ⁴	0.196	3.8	0.007	0.87	L-May 2020	4.1
Fruits and vegetables.....	1.341	3.2	0.042	0.58	L-Mar.2019	3.9
Fresh fruits and vegetables.....	1.055	2.7	0.028	0.61	—	—
Fresh fruits.....	0.543	1.4	0.008	0.64	S-Oct.2020	0.5
Apples.....	0.073	0.2	0.000	1.68	L-Oct.2019	2.3
Bananas.....	0.075	-4.0	-0.003	1.27	S-Oct.2017	-4.8
Citrus fruits ⁴	0.144	2.6	0.003	1.55	L-Jan.2019	3.1
Oranges, including tangerines ⁵		1.9		2.14	L-Mar.2019	2.7
Other fresh fruits ⁴	0.251	2.8	0.007	1.12	S-Jul.2020	1.9
Fresh vegetables.....	0.512	4.2	0.021	0.97	L-Oct.2020	4.2
Potatoes.....	0.075	-0.1	0.000	2.45	S-Sep.2020	-0.2
Lettuce.....	0.068	8.9	0.006	2.84	L-Oct.2020	10.5
Tomatoes.....	0.082	4.5	0.004	2.00	S-Feb.2020	3.9
Other fresh vegetables.....	0.286	4.1	0.012	1.12	L-Jun.2019	5.1
Processed fruits and vegetables ⁴	0.286	4.8	0.013	0.94	L-Sep.2020	4.8
Canned fruits and vegetables ⁴	0.149	5.0	0.007	1.33	S-Oct.2020	2.8
Canned fruits ^{4, 5}		3.8		1.81	S-Aug.2020	2.9
Canned vegetables ^{4, 5}		6.3		1.74	L-Apr.2012	8.2
Frozen fruits and vegetables ⁴	0.086	5.1	0.004	1.57	L-Oct.2020	5.8
Frozen vegetables ⁵		4.4		1.70	L-Oct.2020	4.9
Other processed fruits and vegetables including dried ⁴	0.051	3.6	0.002	1.31	L-Oct.2020	3.8
Dried beans, peas, and lentils ^{4, 5}		4.6		2.39	L-Sep.2020	8.2
Nonalcoholic beverages and beverage materials.....	0.923	4.4	0.040	0.56	L-Oct.2020	4.4
Juices and nonalcoholic drinks ⁴	0.661	5.2	0.034	0.71	L-Oct.2020	5.6
Carbonated drinks.....	0.276	7.1	0.019	1.43	L-Oct.2020	7.9
Frozen noncarbonated juices and drinks ⁴	0.006	1.0	0.000	1.37	L-Oct.2020	1.6
Nonfrozen noncarbonated juices and drinks ⁴	0.380	4.0	0.015	0.79	S-Oct.2020	4.0
Beverage materials including coffee and tea ⁴	0.261	2.4	0.006	0.82	L-Apr.2015	3.0
Coffee.....	0.167	2.4	0.004	1.08	L-Jul.2015	2.8
Roasted coffee ⁵		2.5		1.05	L-Jul.2015	3.6
Instant coffee ⁵		1.7		2.32	L-Oct.2020	2.7
Other beverage materials including tea ⁴	0.094	2.6	0.002	1.16	L-Aug.2020	3.3
Other food at home.....	1.963	3.9	0.074	0.33	L-Aug.2020	4.2
Sugar and sweets.....	0.269	4.6	0.012	0.80	L-Nov.2020	4.9
Sugar and sugar substitutes.....	0.038	9.4	0.003	1.49	L-Nov.2006	9.6
Candy and chewing gum ⁴	0.179	4.3	0.008	1.07	L-May 2020	4.9
Other sweets ⁴	0.053	2.4	0.001	1.22	L-Aug.2020	2.5
Fats and oils.....	0.211	2.8	0.006	0.77	L-Nov.2017	2.8
Butter and margarine ⁴	0.062	1.7	0.001	1.23	L-Sep.2020	1.9
Butter ⁵		-0.5		1.96	L-Oct.2020	0.9
Margarine ⁵		5.7		1.35	L-May 2017	5.7
Salad dressing ⁴	0.051	2.3	0.001	1.42	L-Sep.2020	2.7
Other fats and oils including peanut butter ⁴	0.099	3.7	0.004	1.19	L-Dec.2012	4.0
Peanut butter ^{4, 5}		11.2		2.62	L-Dec.2012	13.8
Other foods.....	1.482	3.9	0.056	0.36	L-Oct.2020	3.9

See footnotes at end of table.

Table 7. Consumer Price Index for All Urban Consumers (CPI-U): U.S. city average, by expenditure category, December 2020, 12-month analysis table — Continued
 [1982-84=100, unless otherwise noted]

Expenditure category	Relative importance Nov. 2020	Twelve Month				
		Unadjusted percent change Dec. 2019-Dec. 2020	Unadjusted effect on All Items Dec. 2019-Dec. 2020 ¹	Standard error, median price change ²	Largest (L) or Smallest (S) unadjusted change since: ³	
					Date	Percent change
Soups.....	0.088	6.7	0.006	1.43	L-Mar.2009	8.4
Frozen and freeze dried prepared foods.....	0.258	4.9	0.012	0.81	L-Sep.2020	5.1
Snacks.....	0.340	4.8	0.016	0.81	L-Jul.2020	6.0
Spices, seasonings, condiments, sauces.....	0.292	3.7	0.010	0.77	S-Oct.2020	3.4
Salt and other seasonings and spices ^{4, 5}		5.1		1.22	L-Apr.2016	5.8
Olives, pickles, relishes ^{4, 5}		6.2		1.58	L-Sep.2019	6.8
Sauces and gravies ^{4, 5}		3.3		1.28	S-Mar.2020	2.3
Other condiments ⁵		1.3		1.77	L-Oct.2020	2.6
Baby food ⁴	0.043	2.8	0.001	2.13	L-Jun.2020	4.2
Other miscellaneous foods ⁴	0.461	2.4	0.011	0.74	L-Oct.2020	3.9
Prepared salads ^{6, 5}		0.0		1.29	S-Sep.2019	-0.5
Food away from home.....	6.330	3.9	0.243	0.18	L-Oct.2020	3.9
Full service meals and snacks ⁴	3.170	3.0	0.093	0.39	L-Mar.2020	3.2
Limited service meals and snacks ⁴	2.776	6.0	0.160	0.25	L-Dec.2008	6.0
Food at employee sites and schools ⁴	0.130	-9.7	-0.014	0.45	—	—
Food at elementary and secondary schools ^{7, 5}		-14.2		0.39	L-Oct.2020	-6.1
Food from vending machines and mobile vendors ⁴	0.080	0.7	0.001	1.05	—	—
Other food away from home ⁴	0.174	1.8	0.003	0.47	L-Sep.2020	2.7
Energy.....	6.044	-7.0	-0.467	0.28	L-Mar.2020	-5.7
Energy commodities.....	2.919	-15.2	-0.548	0.33	L-Mar.2020	-10.4
Fuel oil and other fuels.....	0.136	-13.3	-0.023	0.83	L-Feb.2020	-4.7
Fuel oil.....	0.076	-20.0	-0.021	1.02	L-Feb.2020	-5.9
Propane, kerosene, and firewood ⁶	0.060	-2.0	-0.001	1.25	S-Aug.2020	-2.2
Motor fuel.....	2.782	-15.3	-0.526	0.34	L-Mar.2020	-10.2
Gasoline (all types).....	2.721	-15.2	-0.512	0.34	L-Mar.2020	-10.2
Gasoline, unleaded regular ⁵		-15.6		1.01	L-Mar.2020	-11.0
Gasoline, unleaded midgrade ^{9, 5}		-13.1		1.02	L-Mar.2020	-6.9
Gasoline, unleaded premium ⁵		-12.9		0.99	L-Sep.2020	-12.4
Other motor fuels ⁴	0.061	-17.6	-0.014	0.49	L-Sep.2020	-17.5
Energy services.....	3.125	2.6	0.082	0.46	L-Feb.2018	2.6
Electricity.....	2.420	2.2	0.053	0.50	L-Mar.2018	2.2
Utility (piped) gas service.....	0.705	4.1	0.028	0.70	S-Oct.2020	1.8
All items less food and energy.....	79.874	1.6	1.288	0.09	—	—
Commodities less food and energy commodities.....	20.279	1.7	0.338	0.21	L-Apr.2012	2.0
Household furnishings and supplies ¹⁰	3.795	2.9	0.109	0.44	—	—
Window and floor coverings and other linens ⁴	0.277	-1.8	-0.005	1.76	S-Dec.2019	-1.9
Floor coverings ⁴	0.063	-1.5	-0.001	2.53	S-Aug.2020	-2.3
Window coverings ⁴	0.059	-0.3	0.000	3.82	S-Nov.2019	-2.5
Other linens ⁴	0.156	-2.5	-0.004	2.71	S-Jan.2020	-3.0
Furniture and bedding.....	0.943	2.2	0.020	0.94	L-Nov.2019	2.2
Bedroom furniture.....	0.329	-0.7	-0.002	1.47	—	—
Living room, kitchen, and dining room furniture ⁴	0.453	2.1	0.010	1.78	L-Nov.2019	3.5
Other furniture ⁴	0.151	9.4	0.013	2.17	L-EVER	—
Infants' furniture ^{7, 5}						
Appliances ⁴	0.221	6.2	0.013	1.76	L-Aug.2020	6.7
Major appliances ⁴	0.079	16.6	0.011	2.33	S-Oct.2020	13.7
Laundry equipment ⁵		16.4		2.81	L-EVER	—
Other appliances ⁴	0.139	1.2	0.002	2.29	L-Sep.2020	2.1
Other household equipment and furnishings ⁴	0.537	1.0	0.005	1.43	L-Sep.2020	1.1
Clocks, lamps, and decorator items.....	0.316	1.6	0.005	2.31	L-Sep.2020	2.2
Indoor plants and flowers ¹¹	0.091	4.2	0.004	1.94	L-Jul.2017	5.2
Dishes and flatware ⁴	0.053	-3.0	-0.002	4.67	S-Oct.2020	-7.2
Nonelectric cookware and tableware ⁴	0.077	-2.0	-0.002	3.13	S-Jul.2020	-3.0

See footnotes at end of table.

Table 7. Consumer Price Index for All Urban Consumers (CPI-U): U.S. city average, by expenditure category, December 2020, 12-month analysis table — Continued
 [1982-84=100, unless otherwise noted]

Expenditure category	Relative importance Nov. 2020	Twelve Month				
		Unadjusted percent change Dec. 2019- Dec. 2020	Unadjusted effect on All Items Dec. 2019- Dec. 2020 ¹	Standard error, median price change ²	Largest (L) or Smallest (S) unadjusted change since: ³	
					Date	Percent change
Tools, hardware, outdoor equipment and supplies ⁴ . . .	0.891	3.7	0.032	0.81	L-EVER	—
Tools, hardware and supplies ⁴	0.243	3.3	0.008	1.49	L-Sep.2011	3.5
Outdoor equipment and supplies ⁴	0.458	3.9	0.017	1.13	S-Oct.2020	1.9
Housekeeping supplies	0.927	4.9	0.044	0.51	S-Oct.2020	4.5
Household cleaning products ⁴	0.364	5.8	0.020	0.71	L-Mar.2009	6.1
Household paper products ⁴	0.234	7.7	0.017	1.26	—	—
Miscellaneous household products ⁴	0.328	1.9	0.006	1.24	S-Apr.2020	1.3
Apparel	2.716	-3.9	-0.110	0.86	L-Mar.2020	-1.6
Men's and boys' apparel	0.678	-3.2	-0.022	1.76	L-Mar.2020	-0.8
Men's apparel	0.543	-2.6	-0.014	1.51	L-Mar.2020	0.1
Men's suits, sport coats, and outerwear	0.089	-13.4	-0.014	3.69	L-Jul.2020	-12.8
Men's underwear, nightwear, swimwear, and accessories	0.163	3.2	0.005	3.27	—	—
Men's shirts and sweaters ⁴	0.153	-4.0	-0.006	2.43	L-Mar.2020	-3.9
Men's pants and shorts	0.132	0.8	0.001	2.31	L-Aug.2020	1.0
Boys' apparel	0.135	-5.5	-0.008	5.37	L-Jul.2020	-3.7
Women's and girls' apparel	1.103	-5.9	-0.068	1.54	L-Oct.2020	-5.4
Women's apparel	0.905	-7.7	-0.074	1.74	L-Oct.2020	-6.8
Women's outerwear	0.064	-6.6	-0.004	4.11	L-Nov.2019	-5.6
Women's dresses	0.095	-11.2	-0.012	3.14	L-Mar.2020	-10.0
Women's suits and separates ⁴	0.460	-8.8	-0.043	2.49	L-Oct.2020	-4.9
Women's underwear, nightwear, swimwear, and accessories ⁴	0.276	-4.6	-0.013	2.54	S-Oct.2020	-5.7
Girls' apparel	0.198	2.8	0.005	3.27	L-Mar.2020	3.3
Footwear	0.655	-2.2	-0.014	1.44	L-Mar.2020	-0.2
Men's footwear	0.228	-2.2	-0.005	1.93	L-Oct.2020	-1.9
Boys' and girls' footwear	0.139	-1.6	-0.002	3.23	S-Oct.2020	-5.9
Women's footwear	0.287	-2.4	-0.007	1.86	L-Mar.2020	0.8
Infants' and toddlers' apparel	0.127	-5.4	-0.007	2.75	S-Oct.2020	-7.6
Jewelry and watches ⁸	0.154	1.1	0.002	3.57	L-Sep.2020	2.8
Watches ⁸	0.039	6.2	0.002	5.88	L-Feb.2020	9.3
Jewelry ⁸	0.115	-0.6	-0.001	4.18	L-Sep.2020	-0.3
Transportation commodities less motor fuel ¹⁰	7.148	5.0	0.342	0.25	S-Sep.2020	4.5
New vehicles	3.734	2.0	0.073	0.43	L-Apr.2012	2.2
New cars and trucks ^{4, 5}		2.0		0.39	L-Apr.2012	2.2
New cars ⁵		2.1		0.52	L-Apr.2012	2.3
New trucks ^{12, 5}		1.9		0.46	L-Jun.2015	1.9
Used cars and trucks	2.778	10.0	0.254	0.06	S-Aug.2020	4.0
Motor vehicle parts and equipment	0.391	0.4	0.002	0.68	L-Oct.2020	0.5
Tires	0.248	0.2	0.001	0.83	L-Oct.2020	0.4
Vehicle accessories other than tires ⁴	0.144	0.8	0.001	1.13	—	—
Vehicle parts and equipment other than tires ⁵		0.8		1.17	S-Aug.2019	0.8
Motor oil, coolant, and fluids ⁵		-5.0		1.97	S-EVER	—
Medical care commodities	1.586	-2.5	-0.041	0.79	S-EVER	—
Medicinal drugs ¹⁰	1.520	-2.1	-0.033	0.82	S-EVER	—
Prescription drugs	1.144	-2.4	-0.028	0.95	S-Jun.1963	-2.8
Nonprescription drugs ¹⁰	0.376	-1.4	-0.005	1.00	L-Sep.2020	-0.6
Medical equipment and supplies ¹⁰	0.066	-10.0	-0.007	1.73	L-Oct.2020	-4.8
Recreation commodities ¹⁰	2.007	-0.2	-0.005	0.62	L-Nov.2019	0.8
Video and audio products ¹⁰	0.270	-0.8	-0.002	0.81	L-EVER	—
Televisions	0.092	-4.9	-0.005	1.38	L-Dec.1998	-4.8
Other video equipment ⁴	0.042	1.8	0.001	2.24	L-Oct.2020	3.7
Audio equipment	0.079	2.0	0.002	2.28	L-Sep.2019	3.0
Recorded music and music subscriptions ⁴	0.046	-0.3	0.000	2.26	S-Aug.2020	-2.0

See footnotes at end of table.

Table 7. Consumer Price Index for All Urban Consumers (CPI-U): U.S. city average, by expenditure category, December 2020, 12-month analysis table — Continued
 [1982-84=100, unless otherwise noted]

Expenditure category	Relative importance Nov. 2020	Twelve Month				
		Unadjusted percent change Dec. 2019-Dec. 2020	Unadjusted effect on All Items Dec. 2019-Dec. 2020 ¹	Standard error, median price change ²	Largest (L) or Smallest (S) unadjusted change since: ³	
					Date	Percent change
Pets and pet products.....	0.629	-1.8	-0.012	0.73	L-Sep.2020	-1.6
Pet food ^{4, 5}		-0.7		0.63	L-Aug.2020	-0.6
Purchase of pets, pet supplies, accessories ^{4, 5}		-3.3		1.18	L-Sep.2020	-2.9
Sporting goods.....	0.600	2.5	0.015	1.48	L-Aug.2020	3.4
Sports vehicles including bicycles.....	0.365	1.3	0.005	2.36	S-Sep.2020	1.3
Sports equipment.....	0.225	4.3	0.010	1.42	L-Mar.2009	5.5
Photographic equipment and supplies.....	0.027	5.4	0.001	1.95	L-Jun.2020	5.6
Film and photographic supplies ^{4, 5}						
Photographic equipment ^{4, 5}		6.7		1.71	L-Apr.2020	7.7
Recreational reading materials.....	0.120	4.6	0.005	1.66	L-Sep.2020	5.0
Newspapers and magazines ⁴	0.068	4.6	0.003	2.30	L-Sep.2020	5.6
Recreational books ⁴	0.050	4.7	0.002	2.36	L-Jun.2020	6.3
Other recreational goods ⁴	0.361	-3.4	-0.013	1.29	S-Oct.2020	-3.4
Toys.....	0.276	-3.7	-0.011	1.49	L-Mar.2012	-3.3
Toys, games, hobbies and playground equipment ^{1, 5}		-0.8		2.03	L-Mar.2012	0.2
Sewing machines, fabric and supplies ⁴	0.022	-7.6	-0.002	2.89	S-Jun.2020	-11.3
Music instruments and accessories ⁴	0.047	0.0	0.000	2.82	L-Oct.2020	2.6
Education and communication commodities ¹⁰	0.500	-2.5	-0.013	1.05	L-Sep.2018	-1.9
Educational books and supplies.....	0.109	0.7	0.001	2.02	L-Oct.2020	0.9
College textbooks ^{13, 5}		0.1		1.97	L-Oct.2020	0.4
Information technology commodities ¹⁰	0.392	-3.3	-0.014	1.23	L-Sep.2018	-3.1
Computers, peripherals, and smart home assistants ⁶	0.294	0.8	0.002	1.59	L-EVER	—
Computer software and accessories ⁴	0.018	-5.1	-0.001	2.89	L-Jun.2019	-4.1
Telephone hardware, calculators, and other consumer information items ⁴	0.080	-16.3	-0.015	1.92	S-EVER	—
Alcoholic beverages.....	1.041	2.8	0.029	0.38	S-Oct.2020	2.3
Alcoholic beverages at home.....	0.583	2.8	0.016	0.53	S-Oct.2020	2.1
Beer, ale, and other malt beverages at home.....	0.225	3.0	0.007	0.72	S-Oct.2020	2.9
Distilled spirits at home.....	0.094	3.0	0.003	1.03	S-Oct.2020	2.6
Whiskey at home ⁵		3.3		1.17	S-Sep.2020	1.5
Distilled spirits, excluding whiskey, at home ⁵		3.1		1.46	S-Oct.2020	3.1
Wine at home.....	0.264	2.6	0.007	0.98	L-Mar.2009	3.9
Alcoholic beverages away from home.....	0.458	2.8	0.013	0.43	S-Oct.2020	2.7
Beer, ale, and other malt beverages away from home ^{4, 5}		2.5		0.82	S-Oct.2020	1.7
Wine away from home ^{4, 5}		2.8		1.00	S-Oct.2020	2.5
Distilled spirits away from home ^{4, 5}		5.9		0.60	S-Oct.2020	5.6
Other goods ¹⁰	1.485	1.8	0.027	0.45	L-Jul.2020	2.1
Tobacco and smoking products.....	0.605	5.1	0.030	0.32	L-Jul.2020	5.2
Cigarettes ⁴	0.526	5.4	0.028	0.33	L-Aug.2020	5.4
Tobacco products other than cigarettes ⁴	0.060	2.1	0.001	1.18	L-Dec.2019	2.8
Personal care products.....	0.683	-0.3	-0.002	0.58	L-May 2020	-0.2
Hair, dental, shaving, and miscellaneous personal care products ⁴	0.367	-0.4	-0.001	0.77	S-Jun.2018	-0.6
Cosmetics, perfume, bath, nail preparations and implements.....	0.307	-0.2	-0.001	1.01	L-Jul.2018	-0.1
Miscellaneous personal goods ⁴	0.197	-0.2	0.000	2.55	L-Jul.2020	1.8
Stationery, stationery supplies, gift wrap ⁵		-0.2		2.41	S-Oct.2020	-1.4
Infants' equipment ^{7, 5}		22.3		2.24	L-EVER	—
Services less energy services.....	59.595	1.6	0.950	0.11	S-Jun.2011	1.6
Shelter.....	33.320	1.8	0.612	0.15	S-Nov.2011	1.8
Rent of shelter ¹⁴	32.954	1.9	0.611	0.15	—	—

See footnotes at end of table.

Table 7. Consumer Price Index for All Urban Consumers (CPI-U): U.S. city average, by expenditure category, December 2020, 12-month analysis table — Continued
 [1982-84=100, unless otherwise noted]

Expenditure category	Relative importance Nov. 2020	Twelve Month				
		Unadjusted percent change Dec. 2019-Dec. 2020	Unadjusted effect on All Items Dec. 2019-Dec. 2020 ¹	Standard error, median price change ²	Largest (L) or Smallest (S) unadjusted change since: ³	
					Date	Percent change
Rent of primary residence.....	7.860	2.3	0.177	0.14	S-Sep.2011	2.1
Lodging away from home ⁴	0.841	-9.5	-0.088	2.54	L-Mar.2020	-6.4
Housing at school, excluding board ¹⁴	0.118	2.1	0.002	0.25	S-Aug.2020	2.1
Other lodging away from home including hotels and motels.....	0.722	-11.2	-0.090	2.87	L-Mar.2020	-7.5
Owners' equivalent rent of residences ¹⁴	24.253	2.2	0.522	0.15	S-Sep.2013	2.2
Owners' equivalent rent of primary residence ¹⁴	23.035	2.2	0.495	0.15	S-Sep.2013	2.2
Tenants' and household insurance ⁴	0.366	0.1	0.000	0.42	L-Dec.2019	0.1
Water and sewer and trash collection services ⁴	1.105	3.6	0.039	0.33	L-Apr.2019	3.6
Water and sewerage maintenance.....	0.810	3.3	0.026	0.40	L-Sep.2020	3.3
Garbage and trash collection ¹²	0.295	4.4	0.013	0.66	L-Apr.2019	4.5
Household operations ⁴	0.883	4.1	0.036	0.71	L-May.2020	4.5
Domestic services ⁴	0.293	5.2	0.015	0.87	L-Oct.2006	5.5
Gardening and lawn care services ⁴						
Moving, storage, freight expense ⁴	0.092	6.0	0.005	2.20	S-Oct.2020	4.3
Repair of household items ⁴						
Medical care services.....	7.311	2.8	0.198	0.53	S-Jun.2019	2.8
Professional services.....	3.667	1.9	0.068	0.83	S-Apr.2020	1.7
Physicians' services.....	1.821	1.7	0.032	1.55	S-Apr.2020	1.2
Dental services.....	1.005	2.9	0.029	0.76	—	—
Eyeglasses and eye care ⁸	0.366	0.4	0.001	0.64	S-Aug.2020	0.4
Services by other medical professionals ⁸	0.474	1.3	0.006	0.47	S-Sep.2020	1.1
Hospital and related services.....	2.420	3.1	0.074	0.52	L-Sep.2020	4.5
Hospital services ¹⁵	2.223	3.0	0.065	0.58	L-Sep.2020	4.6
Inpatient hospital services ^{15, 5}		2.1		0.84	S-Sep.2019	1.7
Outpatient hospital services ^{8, 5}		2.3		1.14	—	—
Nursing homes and adult day services ¹⁵	0.125	2.9	0.004	0.51	S-Oct.2020	2.9
Care of invalids and elderly at home ⁷	0.073	7.4	0.005	0.93	L-EVER	—
Health insurance ⁷	1.224	4.8	0.056	0.61	S-Nov.2018	3.9
Transportation services.....	5.189	-3.5	-0.187	0.33	S-Oct.2020	-5.1
Leased cars and trucks ¹³						
Car and truck rental ⁴	0.139	5.3	0.007	2.41	S-Aug.2020	2.0
Motor vehicle maintenance and repair.....	1.100	3.4	0.037	0.59	S-Oct.2020	3.2
Motor vehicle body work.....	0.059	2.6	0.001	0.88	S-Mar.2019	2.4
Motor vehicle maintenance and servicing.....	0.635	2.6	0.016	0.80	S-Oct.2020	2.3
Motor vehicle repair ⁴	0.346	5.1	0.017	0.93	S-Oct.2020	5.1
Motor vehicle insurance.....	1.577	-4.8	-0.082	0.59	L-Aug.2020	-1.5
Motor vehicle fees ⁴	0.567	0.1	0.000	0.46	S-Jan.2015	0.1
State motor vehicle registration and license fees ⁴	0.297	1.3	0.004	0.32	S-Oct.2020	1.3
Parking and other fees ⁴	0.256	-1.3	-0.003	0.83	S-Jun.2020	-1.7
Parking fees and tolls ^{4, 5}		0.2		0.74	S-Aug.2020	-0.1
Automobile service clubs ^{4, 5}		-0.6		0.97	S-Jan.2018	-1.1
Public transportation.....	1.155	-12.0	-0.153	0.71	—	—
Airline fares.....	0.687	-18.4	-0.145	1.04	S-Oct.2020	-20.0
Other intercity transportation.....	0.178	2.5	0.005	1.70	L-Apr.2017	2.5
Intercity bus fare ^{6, 5}		12.8		6.41	S-Oct.2020	5.9
Intercity train fare ^{6, 5}						
Ship fare ^{4, 5}		1.3		1.95	L-Jun.2018	1.4
Intracity transportation.....	0.288	-4.3	-0.013	0.64	L-Sep.2020	-0.3
Intracity mass transit ^{10, 5}		-9.5		1.11	—	—
Recreation services ¹⁰	3.811	1.6	0.060	0.56	S-Sep.2019	1.6
Video and audio services ¹⁰	1.264	3.4	0.042	0.66	S-Apr.2020	3.2
Cable and satellite television service ¹²	1.187	4.2	0.049	0.66	S-Apr.2020	3.9

See footnotes at end of table.

Table 7. Consumer Price Index for All Urban Consumers (CPI-U): U.S. city average, by expenditure category, December 2020, 12-month analysis table — Continued
 [1982-84=100, unless otherwise noted]

Expenditure category	Relative importance Nov. 2020	Twelve Month				
		Unadjusted percent change Dec. 2019- Dec. 2020	Unadjusted effect on All Items Dec. 2019- Dec. 2020 ¹	Standard error, median price change ²	Largest (L) or Smallest (S) unadjusted change since: ³	
					Date	Percent change
Video discs and other media, including rental of video ⁴	0.077	-7.6	-0.006	2.85	L-Oct.2020	-4.6
Video discs and other media ^{4, 5}		-9.3		5.58	L-Oct.2020	-5.5
Rental of video discs and other media ^{4, 5}		2.3		1.16	L-May 2020	2.4
Pet services including veterinary ⁴	0.560	3.0	0.017	0.63	S-Jan.2019	2.7
Pet services ^{4, 5}		1.7		1.49	S-Jul.2020	1.6
Veterinarian services ^{4, 5}		3.5		0.53	S-Jun.2020	3.4
Photographers and photo processing ⁴	0.045	1.9	0.001	1.40	S-Jul.2020	1.7
Photographer fees ^{4, 5}						
Photo processing ^{4, 5}		-2.7		1.42	S-Mar.2020	-3.1
Other recreation services ⁴	1.942	0.0	0.000	1.03	S-Jul.2020	-0.1
Club membership for shopping clubs, fraternal, or other organizations, or participant sports fees ⁴	0.688	-0.4	-0.003	0.72	S-Aug.2020	-2.2
Admissions.....	0.712	-0.9	-0.007	2.01	S-EVER	—
Admission to movies, theaters, and concerts ^{4, 5}		1.2		1.29	L-Jun.2020	4.1
Admission to sporting events ^{4, 5}						
Fees for lessons or instructions ⁸	0.218	3.6	0.008	1.95	S-Oct.2020	3.4
Education and communication services ¹⁰	6.315	2.3	0.145	0.22	S-Jun.2020	1.8
Tuition, other school fees, and childcare.....	2.926	1.4	0.041	0.33	L-Sep.2020	1.5
College tuition and fees.....	1.571	0.7	0.012	0.46	L-Sep.2020	0.7
Elementary and high school tuition and fees.....	0.431	2.3	0.010	0.49	—	—
Day care and preschool ¹¹	0.768	2.2	0.017	0.46	S-Feb.2019	2.2
Technical and business school tuition and fees ⁴	0.037	2.8	0.001	0.38	S-Oct.2020	2.8
Postage and delivery services ⁴	0.111	4.1	0.004	0.23	L-Sep.2020	4.1
Postage.....	0.101	4.3	0.004	0.25	—	—
Delivery services ⁴	0.010	1.0	0.000	0.84	L-Mar.2020	1.3
Telephone services ⁴	2.373	4.2	0.096	0.29	S-Jun.2020	1.4
Wireless telephone services ⁴	1.963	4.1	0.078	0.31	S-Jul.2020	3.4
Land-line telephone services ¹⁰	0.410	4.6	0.018	0.72	S-Sep.2019	3.6
Internet services and electronic information providers ⁴	0.893	0.4	0.003	0.93	S-Sep.2019	0.1
Other personal services ¹⁰	1.662	2.9	0.048	0.36	L-Sep.2020	3.1
Personal care services.....	0.688	5.6	0.037	0.48	L-Jul.2020	5.6
Haircuts and other personal care services ⁴	0.688	5.6	0.037	0.48	L-Jul.2020	5.6
Miscellaneous personal services.....	0.974	1.1	0.011	0.47	L-Oct.2020	1.3
Legal services ⁸	0.250	1.3	0.003	0.93	—	—
Funeral expenses ⁸	0.140	1.0	0.001	0.63	S-EVER	—
Laundry and dry cleaning services ⁴	0.220	1.8	0.004	0.69	—	—
Apparel services other than laundry and dry cleaning ⁴	0.030	3.6	0.001	1.68	L-Oct.2020	4.4
Financial services ⁸	0.223	-0.1	0.000	1.05	L-Oct.2020	0.6
Checking account and other bank services ^{4, 5}		-2.1		0.22	L-Oct.2020	-1.6
Tax return preparation and other accounting fees ^{4, 5}		1.6		1.83	S-Feb.2020	-0.5
Special aggregate indexes						
All items less food.....	85.918	1.0	0.821	0.09	L-Sep.2020	1.0
All items less shelter.....	66.680	1.1	0.750	0.11	L-Feb.2020	1.9
All items less food and shelter.....	52.598	0.4	0.209	0.13	L-Mar.2020	0.5
All items less food, shelter, and energy.....	46.554	1.5	0.676	0.14	L-Sep.2020	1.5
All items less food, shelter, energy, and used cars and trucks.....	43.776	1.0	0.422	0.14	L-Sep.2020	1.0
All items less medical care.....	91.104	1.3	1.204	0.08	L-Feb.2020	2.1

See footnotes at end of table.

Table 7. Consumer Price Index for All Urban Consumers (CPI-U): U.S. city average, by expenditure category, December 2020, 12-month analysis table — Continued
 [1982-84=100, unless otherwise noted]

Expenditure category	Relative importance Nov. 2020	Twelve Month				
		Unadjusted percent change Dec. 2019-Dec. 2020	Unadjusted effect on All Items Dec. 2019-Dec. 2020 ¹	Standard error, median price change ²	Largest (L) or Smallest (S) unadjusted change since: ³	
					Date	Percent change
All items less energy.....	93.956	2.0	1.829	0.08	L-Oct.2020	2.0
Commodities.....	37.280	0.9	0.330	0.13	L-Feb.2020	1.3
Commodities less food, energy, and used cars and trucks.....	17.501	0.5	0.084	0.24	L-Aug.2019	0.7
Commodities less food.....	23.198	-0.9	-0.211	0.19	L-Feb.2020	1.0
Commodities less food and beverages.....	22.157	-1.1	-0.239	0.20	L-Feb.2020	1.0
Services.....	62.720	1.7	1.032	0.10	—	—
Services less rent of shelter ¹⁴	29.766	1.4	0.420	0.17	S-Oct.2020	1.4
Services less medical care services.....	55.409	1.5	0.834	0.11	S-Oct.2020	1.5
Durables.....	10.944	3.9	0.412	0.27	L-Feb.1985	4.1
Nondurables.....	26.336	-0.3	-0.082	0.16	L-Mar.2020	-0.3
Nondurables less food.....	12.254	-4.8	-0.622	0.27	L-Mar.2020	-2.5
Nondurables less food and beverages.....	11.213	-5.4	-0.651	0.29	L-Mar.2020	-2.8
Nondurables less food, beverages, and apparel.....	8.496	-5.9	-0.540	0.25	L-Sep.2020	-5.5
Nondurables less food and apparel.....	9.537	-5.0	-0.512	0.23	L-Sep.2020	-4.7
Housing.....	42.364	2.0	0.855	0.13	—	—
Education and communication ⁴	6.815	2.0	0.132	0.22	L-Oct.2020	2.1
Education ⁴	3.035	1.4	0.042	0.34	L-Sep.2020	1.4
Communication ⁴	3.781	2.4	0.090	0.32	—	—
Information and information processing ⁴	3.669	2.4	0.086	0.33	L-Oct.2020	2.8
Information technology, hardware and services ¹⁶	1.296	-0.8	-0.011	0.77	L-Jun.2020	-0.4
Recreation ⁴	5.818	0.9	0.055	0.47	S-Apr.2020	0.9
Video and audio ⁴	1.534	2.6	0.040	0.58	S-Jun.2020	2.0
Pets, pet products and services ⁴	1.189	0.4	0.005	0.51	S-Oct.2020	0.2
Photography ⁴	0.073	3.2	0.002	1.34	L-Jun.2020	3.5
Food and beverages.....	15.123	3.8	0.569	0.14	L-Oct.2020	3.8
Domestically produced farm food.....	6.477	3.9	0.248	0.21	L-Oct.2020	4.0
Other services.....	11.788	2.2	0.253	0.23	S-Feb.2020	2.2
Apparel less footwear.....	2.062	-4.5	-0.096	1.05	L-Mar.2020	-1.9
Fuels and utilities.....	4.366	2.3	0.098	0.34	L-Mar.2018	3.0
Household energy.....	3.261	1.8	0.059	0.43	L-Apr.2018	1.9
Medical care.....	8.896	1.8	0.157	0.43	S-Mar.2019	1.7
Transportation.....	15.120	-2.4	-0.372	0.16	L-Mar.2020	-2.4
Private transportation.....	13.965	-1.5	-0.218	0.17	L-Feb.2020	1.7
New and used motor vehicles ⁴	7.547	4.8	0.351	0.26	S-Oct.2020	4.7
Utilities and public transportation.....	8.945	1.3	0.112	0.23	—	—
Household furnishings and operations.....	4.678	3.2	0.146	0.37	L-Jan.1989	3.2
Other goods and services.....	3.147	2.4	0.075	0.30	L-Jul.2020	2.7
Personal care.....	2.542	1.8	0.045	0.37	L-Jul.2020	2.0

¹ The 'effect' of an item category is a measure of that item's contribution to the All items price change. For example, if the Food index had an effect of 0.40, and the All items index rose 1.2 percent, then the increase in food prices contributed 0.40 / 1.2, or 33.3 percent, to that All items increase. Said another way, had food prices been unchanged for that year the change in the All items index would have been 1.2 percent minus 0.40, or 0.8 percent. Effects can be negative as well. For example, if the effect of food was a negative 0.1, and the All items index rose 0.5 percent, the All items index actually would have been 0.1 percent higher (or 0.6 percent) had food prices been unchanged. Since food prices fell while prices overall were rising, the contribution of food to the All items price change was negative (in this case, -0.1 / 0.5, or minus 20 percent).

² A statistic's margin of error is often expressed as its point estimate plus or minus two standard errors. For example, if a CPI category rose 2.6 percent, and its standard error was 0.25 percent, the margin of error on this item's 12-month percent change would be 2.6 percent, plus or minus 0.5 percent.

³ If the current 12-month percent change is greater than the previous published 12-month percent change, then this column identifies the closest prior month with a 12-month percent change as (L)arge as or (L)arger than the current 12-month change. If the current 12-month percent change is smaller than the previous published 12-month percent change, the most recent month with a change as (S)mall or (S)maller than the current month change is identified. If the current and previous published 12-month percent changes are equal, a dash will appear. Standard numerical comparison is used. For example, 2.0% is greater than 0.6%, -4.4% is less than -2.0%, and -2.0% is less than 0.0%. Note that a (L)arger change can be a smaller decline, for example, a -0.2% change is larger than a -0.4% change, but still represents a decline in the price index. Likewise, (S)maller changes can be increases, for example, a 0.6% change is smaller than 0.8%, but still represents an increase in the price index. In this context, a -0.2% change is considered to be smaller than a 0.0% change.

⁴ Indexes on a December 1997=100 base.

⁵ Special indexes based on a substantially smaller sample. These series do not contribute to the all items index aggregation and therefore do not have a relative importance or effect.

⁶ Indexes on a December 2007=100 base.

⁷ Indexes on a December 2005=100 base.

⁸ Indexes on a December 1986=100 base.

⁹ Indexes on a December 1993=100 base.

¹⁰ Indexes on a December 2009=100 base.

¹¹ Indexes on a December 1990=100 base.

¹² Indexes on a December 1983=100 base.

¹³ Indexes on a December 2001=100 base.

¹⁴ Indexes on a December 1982=100 base.

¹⁵ Indexes on a December 1996=100 base.

¹⁶ Indexes on a December 1988=100 base.